

**GLAZING NOTES:**

- GLAZING IN THE FOLLOWING LOCATIONS SHALL BE SAFETY GLAZING CONFORMING TO HUMAN IMPACT LOADS OF SECTION R308.3 (SEE EXCEPTIONS) (R308.4):
  - FIXED AND OPERABLE PANELS OF SWINGING, SLIDING AND BI-FOLD DOOR ASSEMBLIES.
  - GLAZING IN AN INDIVIDUAL FIXED OR OPERABLE PANEL ADJACENT TO A DOOR WHERE THE NEAREST VERTICAL EDGE IS WITHIN A 24-INCH ARC OF THE DOOR IN A CLOSED POSITION WHOSE BOTTOM EDGE IS LESS THAN 60 INCHES ABOVE THE FLOOR OR WALKING SURFACE.
  - GLAZING IN AN INDIVIDUAL FIXED OR OPERABLE PANEL THAT MEETS ALL OF THE FOLLOWING CONDITIONS:
    - EXPOSED AREA OF AN INDIVIDUAL PANE GREATER THAN 9 SQUARE FEET.
    - BOTTOM EDGE LESS THAN 36 INCHES ABOVE THE FLOOR.
    - TOP EDGE GREATER THAN 36 INCHES ABOVE THE FLOOR.
    - ONE OR MORE WALKING SURFACES WITHIN 36 INCHES HORIZONTALLY OF THE GLAZING.
  - GLAZING IN RAILINGS.
  - GLAZING IN ENCLOSURES FOR OR FACING HOT TUBS, WHIRLPOOLS, SAUNAS, STEAM ROOMS, BATHTUBS AND SHOWERS WHERE THE BOTTOM EDGE OF THE GLAZING IS LESS THAN 60 INCHES MEASURED VERTICALLY ABOVE ANY STANDING OR WALKING SURFACE.
  - GLAZING IN WALLS AND FENCES ADJACENT TO INDOOR AND OUTDOOR SWIMMING POOLS, HOT TUBS AND SPAS WHERE THE BOTTOM EDGE OF THE GLAZING IS LESS THAN 60 INCHES ABOVE A WALKING SURFACE AND WITHIN 60 INCHES, MEASURED HORIZONTALLY AND IN A STRAIGHT LINE, OF THE WATER'S EDGE.
  - GLAZING ADJACENT TO STAIRWAYS, LANDINGS AND RAMPS WITHIN 36 INCHES HORIZONTALLY OF A WALKING SURFACE WHEN THE GLAZING IS LESS THAN 60 INCHES ABOVE THE PLANE OF THE ADJACENT WALKING SURFACE.
  - GLAZING ADJACENT TO STAIRWAYS WITHIN 60 INCHES HORIZONTALLY OF THE BOTTOM TREAD OF A STAIRWAY IN ANY DIRECTION WHEN THE EXPOSED SURFACE OF THE GLAZING IS LESS THAN 60 INCHES ABOVE THE NOSE OF THE TREAD.

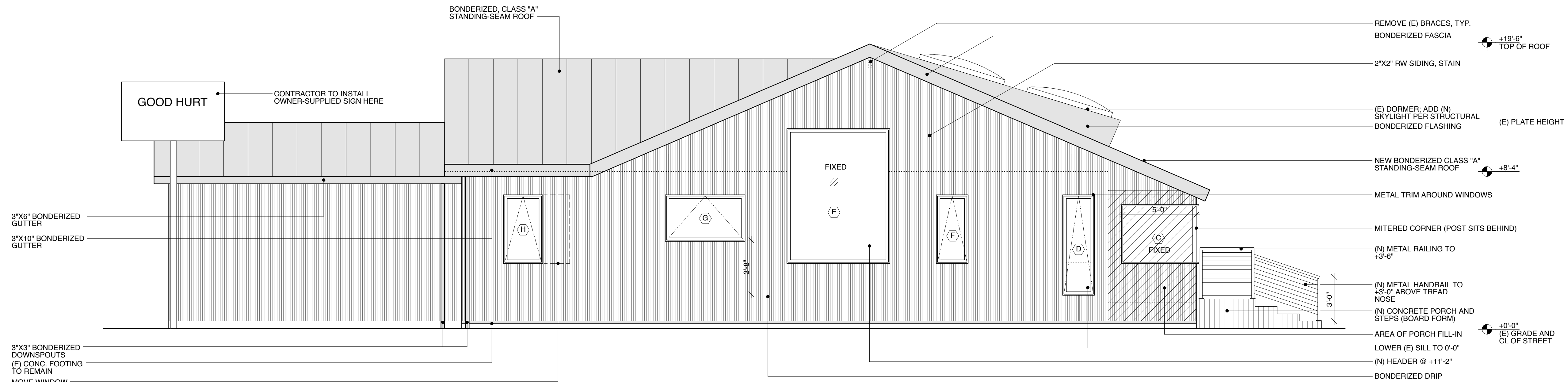
**WINDOW SCHEDULE**

WINDOW	WIDTH x HEIGHT	SILL HT.	QTY.	MFTR.	MODEL	TYPE	GLAZING	FRAME MATERIAL	REMARKS
(A)	6'-10" X 3'-10"	3'-0"	1	JACK'S	JACK'S	FIXED	DUAL LOW-E	ALUMINUM	BLACK ANODIZED
(B)	7'-9" X 3'-10"	2'-2"	1			FIXED, MITERED CORNER	1/4" CLEAR LAMINATED	N/A	FRAMELESS
(C)	5'-0" X 3'-10"	2'-2"	1			MITERED CORNER	1/4" CLEAR LAMINATED	N/A	FRAMELESS
(D)	1'-8" X 6'-4"	0'-0"	1			AWNING	DUAL LOW-E TEMPERED	ALUMINUM	BLACK ANODIZED
(E)	6'-6" X 8'-8"	2'-2"	1			FIXED	1/4" CLEAR LAMINATED	N/A	FRAMELESS
(F)	2'-0" X 4'-6"	2'-2"	1			AWNING	DUAL LOW-E	ALUMINUM	BLACK ANODIZED
(G)	5'-3" X 3'-0"	3'-8"	1			AWNING	DUAL LOW-E	ALUMINUM	BLACK ANODIZED
(H)	2'-6" X 4'-6"	2'-2"	1			AWNING	DUAL LOW-E	ALUMINUM	BLACK ANODIZED
(I)	2'-6" X 4'-6"	2'-2"	1			AWNING	DUAL LOW-E	ALUMINUM	BLACK ANODIZED
(J)	1'-7" X 2'-7"	4'-0"	1			AWNING	DUAL LOW-E	ALUMINUM	BLACK ANODIZED, IN (E) OPENING
(K)	6'-0" X 6'-0"	N/A	2	SUN VALLEY	SKYLIGHTS	OPERABLE ON MOTOR	DUAL PLASTIC	ALUMINUM	BLACK ANODIZED
(L)	6'-8" X 1'-0"	0'-0"	1	JACK'S	JACK'S	FIXED SIDELIGHT	1/4" CLEAR LAMINATED	N/A	FRAMELESS, AT FRONT DOOR

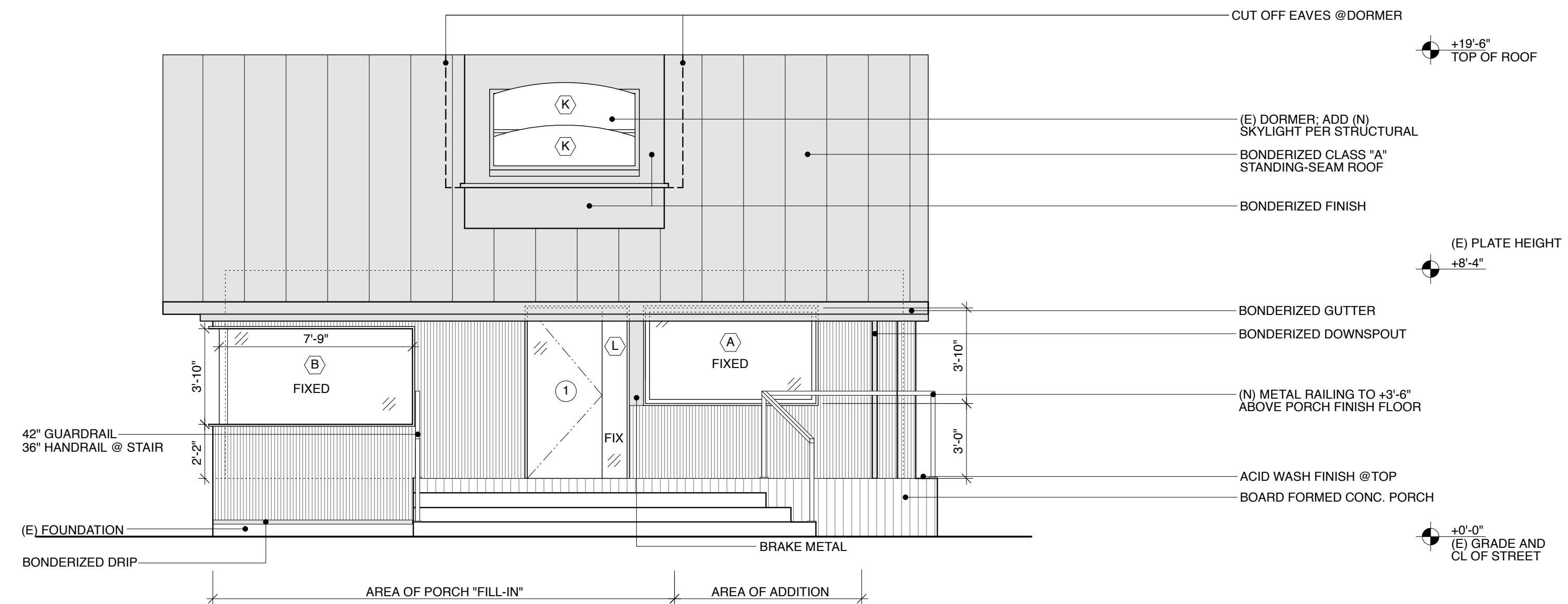
**DOOR SCHEDULE**

DOOR	WIDTH	HEIGHT	THK	QTY	TYPE	THRES.	MATERIAL	MFTR.	GLAZING	HARDWARE	REMARKS
(1)	3'-0"	6'-10"	1/2"	1	SWING	YES		HERCULITE	1/2" CLEAR TEMPERED	EXISTING FLOOR LOCK & OVERHEAD HINGE	REUSE (E) HERCULITE DOOR
(2)	8'-0"	8'-0"	2"	1	XXX SLIDER	NO	ALUMINUM		1/4" CLEAR TEMPERED		
(3)	3'-0"	6'-8"	1 3/4"	1	SWING	NO	SOLID CORE INTERIOR WOOD		NONE		
(4)	6'-0"	6'-8"	1 3/4"	1	PAIR SWING	YES	HOLLOW CORE EXTERIOR STEEL		NONE		

WINDOW AND DOOR SCHEDULE 3



SOUTHEAST ELEVATION 2



NORTHEAST (FRONT) ELEVATION 1

**PROJECT:**  
1524 ABBOT  
KINNEY

**ARCHITECT:**  
DU

**DesignUniversal**  
ARCHITECTURE AND DESIGN

ROBERT THIBODEAU  
529 CALIFORNIA AVENUE  
VENICE, CA 90291

PH: 310.452.8161  
FX: 310.452.8171

**OWNER:**

TAMI PARDEE  
PARDEE PROPERTIES  
604 VENICE BLVD  
VENICE, CA 90291

PH: 310.600.7217  
FX: 310.822.1680

**CONTRACTOR:**

DAVID DE PRIEST, LLC #814310  
DAVID DE PRIEST CONSTRUCTION  
3601 PINE AVE  
LONG BEACH, CA 90807

PH: 310.930.2305  
FX: 562.856.7688

**STRUCTURAL ENGINEER:**

GORDON POLON  
CONSULTING ENGINEERS  
1718 22ND ST  
SANTA MONICA, CA 90404

PH: 310.998.5611  
FX: 310.829.2744

**SURVEYOR:**

MARK R. DANIELSON, PLS 7882  
DANIELSON SURVEYING  
13916 TYLER ST  
SYLMAR, CA 91342  
SATELLITE OFFICE:  
IRVINDALE, CA 91706

PH: 818-362-8886  
626-337-6854  
FX: 818-362-8000

REVISION / ISSUE:	DATE:
1. PRELIM DESIGN	10/24/2011
2. SUBMITTAL SET	12/16/2011
3. PLAN CHECK CORR.	1/11/2012
4. REVISED BID SET	1/13/2012
5. CONSTRUCTION SET	2/13/2012
6. REV. CONSTRUCTION SET	2/22/2012

EXTERIOR ELEVATIONS

DATE: 10/24/2011 DRAWN: MAA SCALE: 1/4" = 1'-0"

**A-2.0**