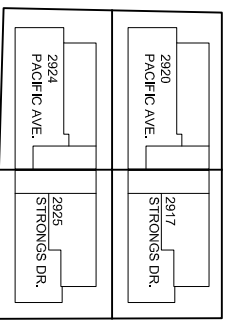
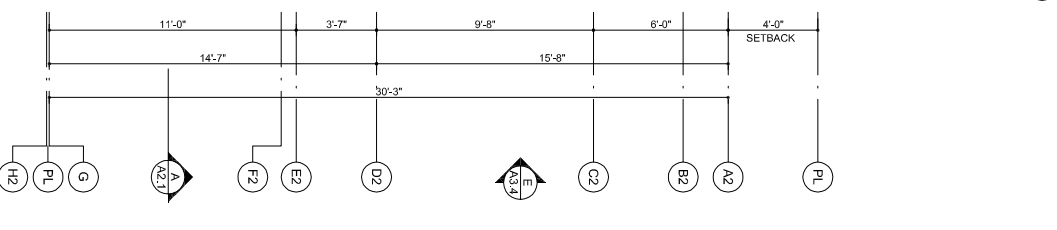
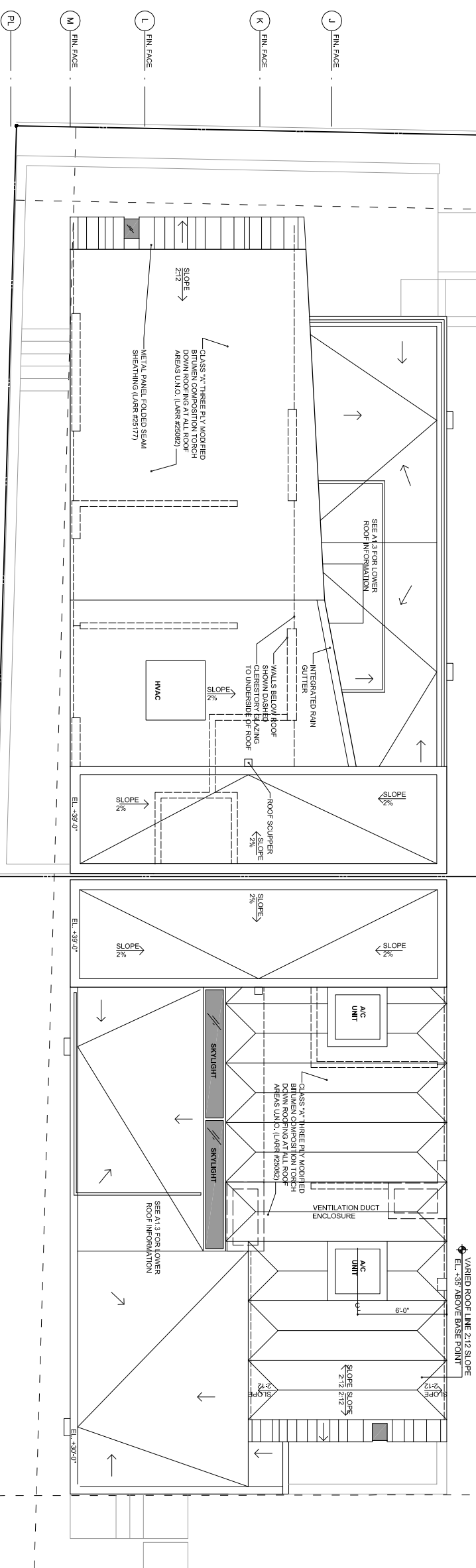
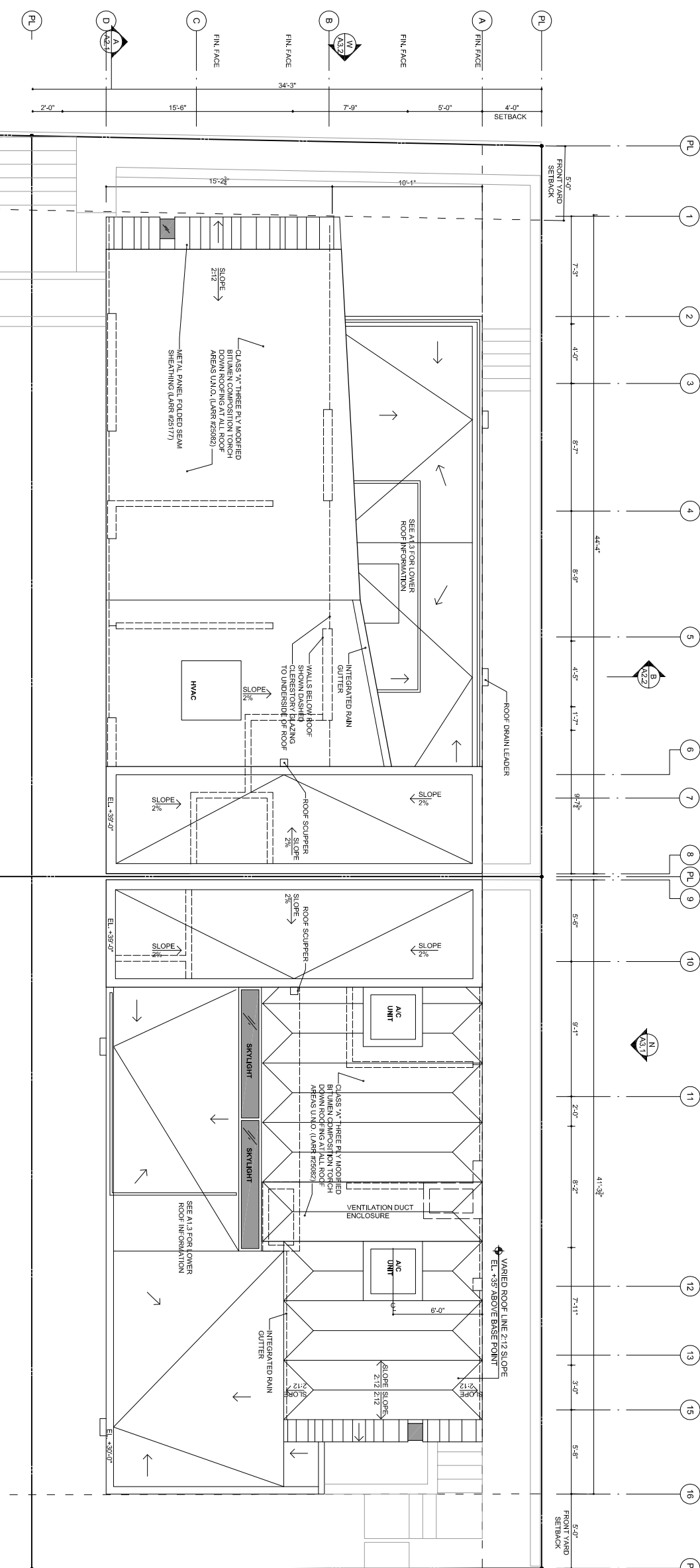


KEYNOTES



KEY PLAN

All ideas, designs, arrangements, and plans indicated or represented by these drawings are owned by and are the property of GLEN IRANI ARCHITECTS and were created, evolved and developed for use on and in connection with the specified project. None of these ideas, designs, arrangements, or plans shall be used by or described to any person, in connection with any project, without the express written permission of GLEN IRANI ARCHITECTS.

All dimensions indicated on these drawings are to be followed. If any information indicated requires further clarification, the General Contractor is to contact the Architect for clarification. Contractors shall verify and be responsible for all dimensions and conditions shown by these drawings. Shop details must be submitted to this office for approval before proceeding with fabrication.

Glen Irani Architects

410 Sherman Canal, Venice, CA, 90291 Tel: 310.365.8840 Fax: 310.822.1801
glen@glenirani.com

ISSUE / REVISION	DATE	PROJECT
GENVNC Submittal	10.05.07	Pac Canal Residences
		Venice, CA, 90291
		sheet no. -

DRAWN BY: VD
JOB NUMBER: 08PAC010
SCALE: 1/4" = 1'-0"
A1.5
sheet title: Roof Plan