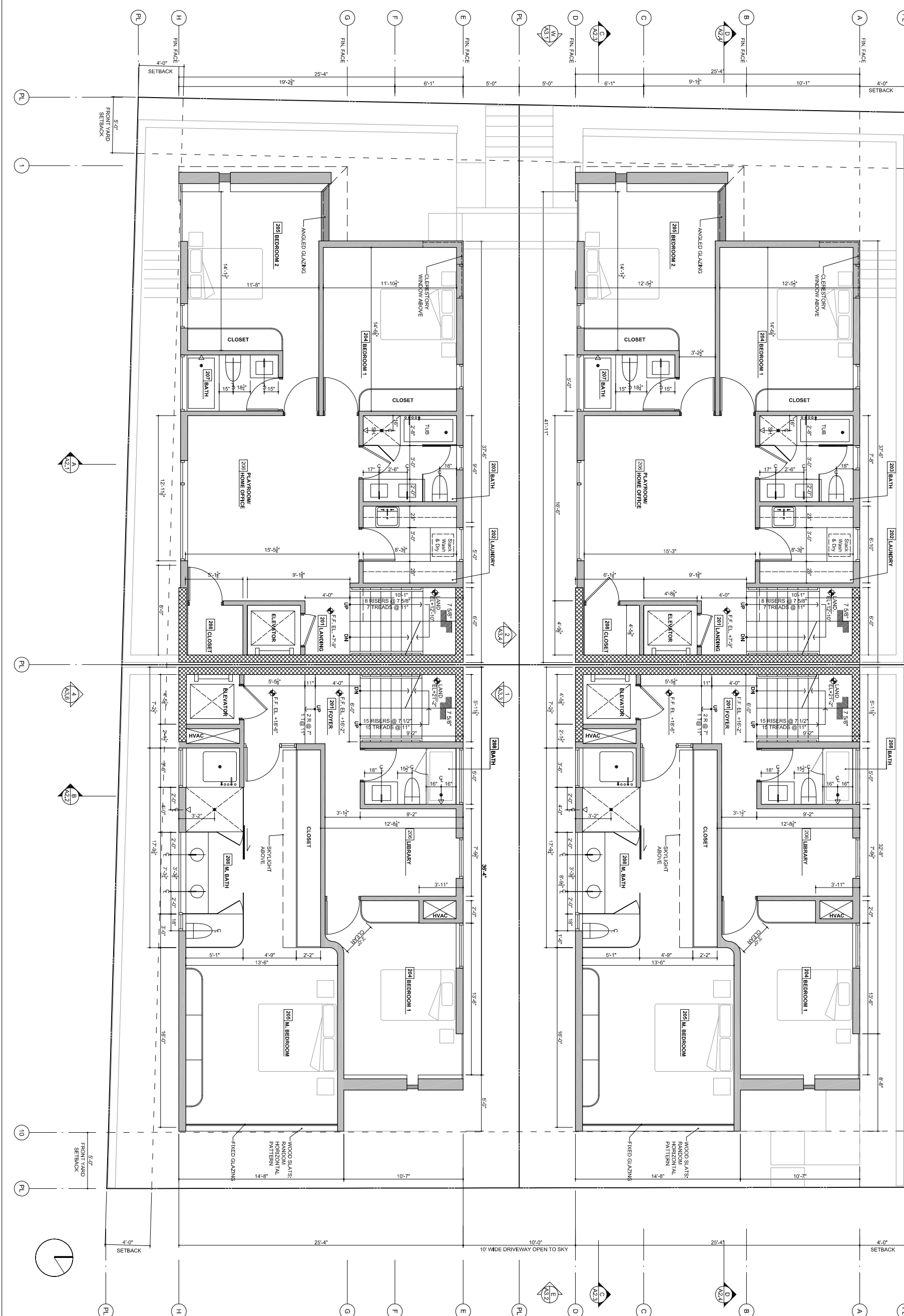
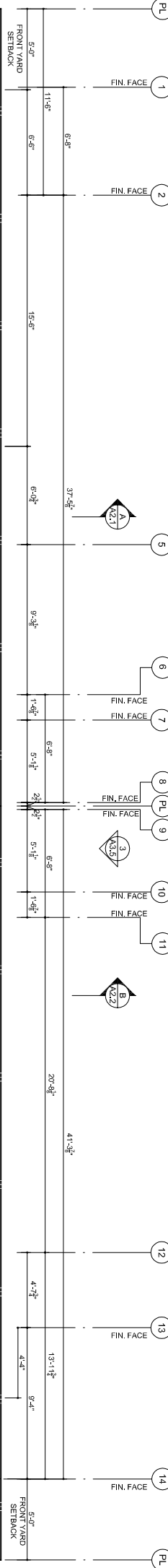
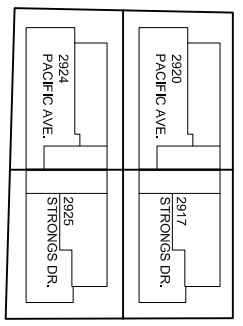


KEYNOTES



KEYPLAN



All ideas, designs, arrangements, and plans indicated or represented by these drawings are owned by and are the property of GLEN IRANI ARCHITECTS and were created, evolved and developed for use on and in connection with the specified project. None of these ideas, designs, arrangements, or plans shall be used, or described to any person, in any project, or for any purpose, without the express written permission of GLEN IRANI ARCHITECTS.

All dimensions indicated on these drawings are to be followed. If any information indicated requires further clarification, the General Contractor is to contact the Architect for clarification. Contractors shall verify and be responsible for all dimensions and conditions shown by these drawings. Shop details must be submitted to this office for approval before proceeding with fabrication.

**Glen Irani Architects**  
 410 Sherman Canal, Venice, CA, 90291  
 glen@glenirani.com  
 Tel: 310.325.8840 Fax: 310.822.1801

ISSUE / REVISION	DATE	PROJECT
GENVAC Submittal	10.05.07	Pac Canal Residences
410 Sherman Canal, Venice, CA, 90291 sheet no. - Venice, CA, 90291		
DRAWN BY	VD	<b>A1.2</b> sheet title:
JOB NUMBER	08PAC010	
SCALE	1/4" = 1'-0"	