

ORDINANCE NO. 179906

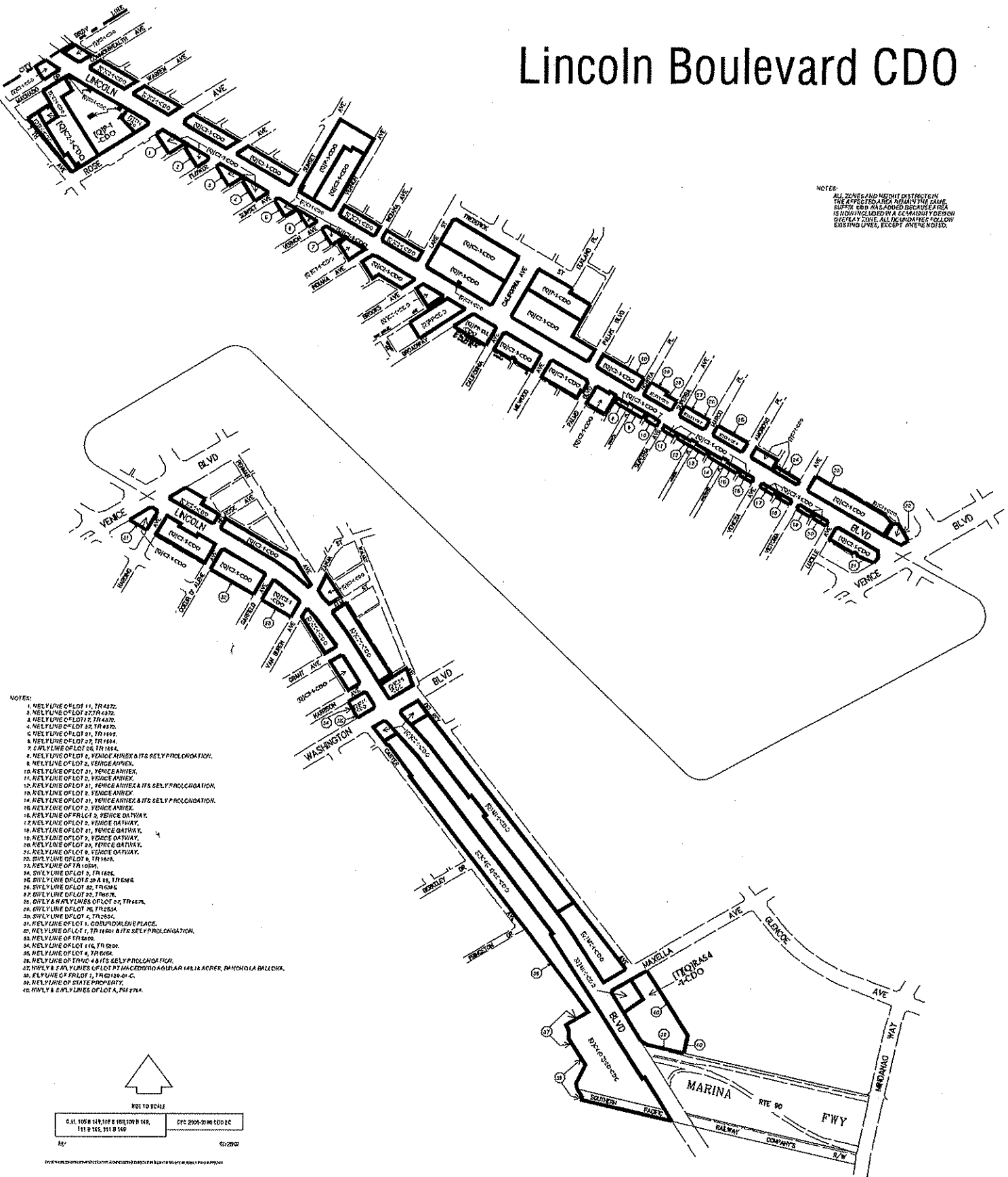
An ordinance amending Section .12.04 of the Los Angeles Municipal Code by amending the zoning map.

THE PEOPLE OF THE CITY OF LOS ANGELES DO ORDAIN AS FOLLOWS:

Section 1. Section 12.04 of the Los Angeles Municipal Code is hereby amended by changing the zones and zone boundaries shown upon a portion of the zone map attached thereto and made a part of Article 2, Chapter 1 of the Los Angeles Municipal Code, so that such portion of the zoning map shall be as follows:

Lincoln Boulevard CDO

NOTES:
 ALL ZONE AND HEIGHT DISTRICTS IN
 THE APPLICABLE AREA REMAIN THE SAME.
 SUPPLEMENTARY DISTRICTS OR HEIGHTS
 IS NOW INCLUDED IN A COMMUNITY DESIGN
 OVERLAY CODE. ALL EXISTING FOLLOW
 EXISTING LINES, EXCEPT WHERE NOTED.



- NOTES:
1. NELY LINE OF LOT 11, TR 4372.
 2. NELY LINE OF LOT 12, TR 4372.
 3. NELY LINE OF LOT 13, TR 4372.
 4. NELY LINE OF LOT 14, TR 4372.
 5. NELY LINE OF LOT 15, TR 4372.
 6. NELY LINE OF LOT 16, TR 4372.
 7. NELY LINE OF LOT 17, TR 4372.
 8. NELY LINE OF LOT 18, TR 4372.
 9. NELY LINE OF LOT 19, TR 4372.
 10. NELY LINE OF LOT 20, TR 4372.
 11. NELY LINE OF LOT 21, TR 4372.
 12. NELY LINE OF LOT 22, TR 4372.
 13. NELY LINE OF LOT 23, TR 4372.
 14. NELY LINE OF LOT 24, TR 4372.
 15. NELY LINE OF LOT 25, TR 4372.
 16. NELY LINE OF LOT 26, TR 4372.
 17. NELY LINE OF LOT 27, TR 4372.
 18. NELY LINE OF LOT 28, TR 4372.
 19. NELY LINE OF LOT 29, TR 4372.
 20. NELY LINE OF LOT 30, TR 4372.
 21. NELY LINE OF LOT 31, TR 4372.
 22. NELY LINE OF LOT 32, TR 4372.
 23. NELY LINE OF LOT 33, TR 4372.
 24. NELY LINE OF LOT 34, TR 4372.
 25. NELY LINE OF LOT 35, TR 4372.
 26. NELY LINE OF LOT 36, TR 4372.
 27. NELY LINE OF LOT 37, TR 4372.
 28. NELY LINE OF LOT 38, TR 4372.
 29. NELY LINE OF LOT 39, TR 4372.
 30. NELY LINE OF LOT 40, TR 4372.
 31. NELY LINE OF LOT 41, TR 4372.
 32. NELY LINE OF LOT 42, TR 4372.
 33. NELY LINE OF LOT 43, TR 4372.
 34. NELY LINE OF LOT 44, TR 4372.
 35. NELY LINE OF LOT 45, TR 4372.
 36. NELY LINE OF LOT 46, TR 4372.
 37. NELY LINE OF LOT 47, TR 4372.
 38. NELY LINE OF LOT 48, TR 4372.
 39. NELY LINE OF LOT 49, TR 4372.
 40. NELY LINE OF LOT 50, TR 4372.
 41. NELY LINE OF LOT 51, TR 4372.
 42. NELY LINE OF LOT 52, TR 4372.
 43. NELY LINE OF LOT 53, TR 4372.
 44. NELY LINE OF LOT 54, TR 4372.
 45. NELY LINE OF LOT 55, TR 4372.
 46. NELY LINE OF LOT 56, TR 4372.
 47. NELY LINE OF LOT 57, TR 4372.
 48. NELY LINE OF LOT 58, TR 4372.
 49. NELY LINE OF LOT 59, TR 4372.
 50. NELY LINE OF LOT 60, TR 4372.
 51. NELY LINE OF LOT 61, TR 4372.
 52. NELY LINE OF LOT 62, TR 4372.
 53. NELY LINE OF LOT 63, TR 4372.
 54. NELY LINE OF LOT 64, TR 4372.
 55. NELY LINE OF LOT 65, TR 4372.
 56. NELY LINE OF LOT 66, TR 4372.
 57. NELY LINE OF LOT 67, TR 4372.
 58. NELY LINE OF LOT 68, TR 4372.
 59. NELY LINE OF LOT 69, TR 4372.
 60. NELY LINE OF LOT 70, TR 4372.
 61. NELY LINE OF LOT 71, TR 4372.
 62. NELY LINE OF LOT 72, TR 4372.
 63. NELY LINE OF LOT 73, TR 4372.
 64. NELY LINE OF LOT 74, TR 4372.
 65. NELY LINE OF LOT 75, TR 4372.
 66. NELY LINE OF LOT 76, TR 4372.
 67. NELY LINE OF LOT 77, TR 4372.
 68. NELY LINE OF LOT 78, TR 4372.
 69. NELY LINE OF LOT 79, TR 4372.
 70. NELY LINE OF LOT 80, TR 4372.
 71. NELY LINE OF LOT 81, TR 4372.
 72. NELY LINE OF LOT 82, TR 4372.
 73. NELY LINE OF LOT 83, TR 4372.
 74. NELY LINE OF LOT 84, TR 4372.
 75. NELY LINE OF LOT 85, TR 4372.
 76. NELY LINE OF LOT 86, TR 4372.
 77. NELY LINE OF LOT 87, TR 4372.
 78. NELY LINE OF LOT 88, TR 4372.
 79. NELY LINE OF LOT 89, TR 4372.
 80. NELY LINE OF LOT 90, TR 4372.
 81. NELY LINE OF LOT 91, TR 4372.
 82. NELY LINE OF LOT 92, TR 4372.
 83. NELY LINE OF LOT 93, TR 4372.
 84. NELY LINE OF LOT 94, TR 4372.
 85. NELY LINE OF LOT 95, TR 4372.
 86. NELY LINE OF LOT 96, TR 4372.
 87. NELY LINE OF LOT 97, TR 4372.
 88. NELY LINE OF LOT 98, TR 4372.
 89. NELY LINE OF LOT 99, TR 4372.
 90. NELY LINE OF LOT 100, TR 4372.

NOT TO SCALE

CAL 100' 1/8" = 1" & 1/16" = 1/8"	CYC 2000' 1/8" = 1" & 1/16" = 1/8"
-----------------------------------	------------------------------------

DATE: 01/20/02

THIS PLAN IS THE PROPERTY OF THE ENGINEER AND ARCHITECT AND IS NOT TO BE REPRODUCED OR COPIED IN ANY MANNER WITHOUT THE WRITTEN PERMISSION OF THE ENGINEER AND ARCHITECT.

QUALIFYING [Q] CONDITIONS

The following conditions shall be imposed upon parcels within the Lincoln Boulevard Community Design Overlay District, and shall be implemented by ordinance:

SECTION 1. Section 12.04 of the Los Angeles Municipal Code is hereby amended by changing the zone classification on properties shown upon a portion of the zoning maps titled "Zone Change Ordinance Map Lincoln Boulevard Design Overlay District" and made a part of Article 2, Chapter 1 of the Los Angeles Municipal Code.

Table for Section 1

Existing Zone	New Zone
C2-1	[Q] C2-1-CDO
[Q]C2-1	[Q] C2-1-CDO
C4-OX-2D	[Q]C4-OX-2D-CDO
M1-1	[Q] M1-1-CDO
[Q]M1-1	[Q] M1-1-CDO
M2-1	[Q]M2-1-CDO
P-1	[Q] P-CDO
(Q)P-1	[Q]P-1-CDO
[Q]PF-1XL	[Q]PF-1XL-CDO
PF	[Q]PF-CDO
[T][Q]RAS4-1	[T][Q]RAS4-1-CDO.

SECTION 2. Pursuant to section 12.32 G of the Los Angeles Municipal Code, and any amendment thereto, the following limitations are hereby imposed upon the use of that property described in Section 1 hereof which are subject to the Permanent "Q" Qualified Classification.

Existing "T" and "Q" conditions, if any, shall be retained. Where the zone symbols of the new zoning designation, as shown in the table for Section 1, are preceded by the symbol "Q" in Brackets, the conditions and limitations imposed by the new or additional "Q" Qualified Classification are set forth as follows:

[Q] Conditions:

1. General

If a portion of a project is within the CDO boundary, the CDO guidelines and standards and requirements contained herein shall apply to the entire project.

2. Uses

a. Buildings with ground floor residential use, on lots with 50 linear feet or more of street frontage on Lincoln, shall dedicate least 20% of the building frontage width, to a depth of 15 feet, to commercial use.

b. Drive through facilities such as those associated with restaurants, kiosks banks, and drugstores, shall be prohibited. Exempted from this are uses with services that require direct access by vehicle, such as car washes and gas stations.

3. Setbacks

New buildings shall front Lincoln Boulevard and building setbacks shall measure not more than 20 feet from the lot line abutting Lincoln Boulevard.

4. Parking Lots and Structures

a. Surface parking lots shall not be constructed between the front property line and the primary building/storefront fronting Lincoln Boulevard.

b. The ground floor of new parking structures abutting Lincoln shall consist of commercial space along the building façade, to a minimum depth of 15 feet.

c. Parking structures with a ground level containing only parking uses shall be located on the rear half of lots.

d. A landscaped buffer shall screen parking structures from all abutting residentially-zoned properties.

e. Parking structures shall be designed to substantially screen automobiles contained therein from the public view.

5. Storefront Transparency

A minimum of 60 percent of the building façade at ground level and abutting a public right-of-way shall consist of doors and transparent windows

6. Entrances

All buildings shall have a ground floor with a primary entrance oriented towards Lincoln Boulevard.

7. Appurtenances

a. External security grilles are prohibited along any building façade abutting Lincoln Boulevard or other public street, excluding rear alleys.

b. All new utility lines that directly service lots in the CDO boundary area shall be installed underground. If underground service is not available, then provisions shall be made for future underground service.

c. Utilities, storage areas, trash containers, air conditioning units, fire alarms, and similar equipment shall be placed to the rear of the site or underground when feasible. If not feasible, structures housing such elements shall be screened with landscaping or designed in a way as to be as inconspicuous as possible.

8. Fencing and walls

Chain-link fences visible from Lincoln Boulevard are prohibited.

9. Landscaping

- a. Trees shall be planted along rear lot lines adjacent to residential parcels at a ratio of one tree for every 25 feet of lot width.
- b. All areas of a site not occupied by buildings, parking, driveways, or used for outdoor dining or other pedestrian uses should be landscaped; a minimum of 80% of landscaped areas shall consist of plant materials.

10. Signage

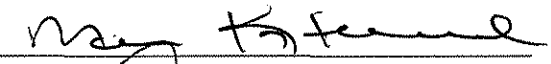
- a. **Prohibited Signs:** Off-site Signs (including Billboards); Pole Signs; freestanding signs on walls and fences; Illuminated Architectural Canopy Signs; Roof Signs; Inflatable Signs, including inflatable devices used for display or to attract attention; blinking, flashing, electronic, moving signs and/or signs with any rotating or moving parts that give the impression of movement;
- b. **Prohibited improvements:** For existing sign types as listed above, the enlargement of signs, the augmentation of signs with lighting or digital displays, and the addition of sign facing (such as a second face on the back of an off-site sign) shall be prohibited.
- c. Each premise or business with a direct public entrance on the exterior of a building shall be permitted one wall sign. If the premise abuts another street, alley, or public parking area, an additional sign is permitted on the building at that location.
- d. Wall sign size shall not exceed one-and-one-half square feet per one foot of building façade length.

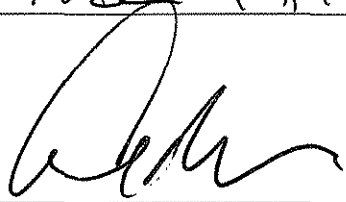
Sec. 3. The City Clerk shall certify to the passage of this ordinance and have it published in accordance with Council policy, either in a daily newspaper circulated in the City of Los Angeles or by posting for ten days in three public places in the City of Los Angeles: one copy on the bulletin board located at the Main Street entrance to the Los Angeles City Hall; one copy on the bulletin board located at the Main Street entrance to the Los Angeles City Hall East; and one copy on the bulletin board located at the Temple Street entrance to the Los Angeles County Hall of Records.

I hereby certify that the foregoing ordinance was introduced at the meeting of the Council of the City of Los Angeles MAY 07 2008 and passed at the meeting of MAY 14 2008.

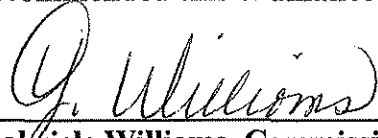
KAREN E. KALFAYAN, City Clerk

Approved MAY 21 2008

By 
Deputy


Mayor

Pursuant to Section 558 of the City Charter,
the City Planning Commission on January 24, 2008,
recommended this ordinance be adopted by the City Council.


Gabriele Williams, Commission Executive Assistant II
City Planning Commission

File No. 08-0736

DECLARATION OF POSTING ORDINANCE

I, MARIA C. RICO, state as follows: I am, and was at all times hereinafter mentioned, a resident of the State of California, over the age of eighteen years, and a Deputy City Clerk of the City of Los Angeles, California.

Ordinance No. 179906 - Establishing the Lincoln Boulevard Community Design Overlay District and zone change for certain parcels lying along Lincoln

Boulevard - CPC 2006-3786-CDO-ZC - a copy of which is hereto attached, was finally adopted by the Los Angeles City Council on **May 14, 2008**, and under the direction of said City Council and the City Clerk, pursuant to Section 251 of the Charter of the City of Los Angeles and Ordinance No. 172959, on **May 22, 2008**

I posted a true copy of said ordinance at each of three public places located in the City of Los Angeles, California, as follows: 1) one copy on the bulletin board located at the Main Street entrance to the Los Angeles City Hall; 2) one copy on the bulletin board located at the Main Street entrance to the Los Angeles City Hall East; 3) one copy on the bulletin board located at the Temple Street entrance to the Hall of Records of the County of Los Angeles.

Copies of said ordinance were posted conspicuously beginning on **May 22, 2008** and will be continuously posted for ten or more days.

I declare under penalty of perjury that the foregoing is true and correct.

Signed this **22nd** day of **May 2008** at Los Angeles, California.



Maria C. Rico, Deputy City Clerk

Ordinance Effective Date: July 1, 2008
Rev. (2/21/06)

Council File No. 08-0736