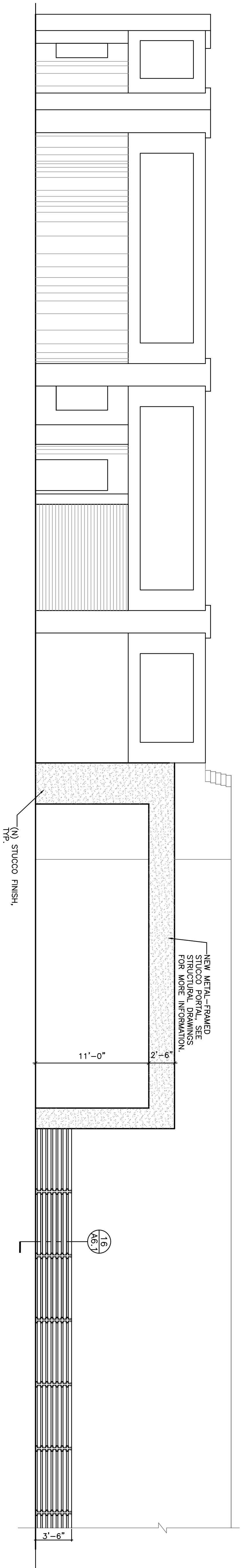


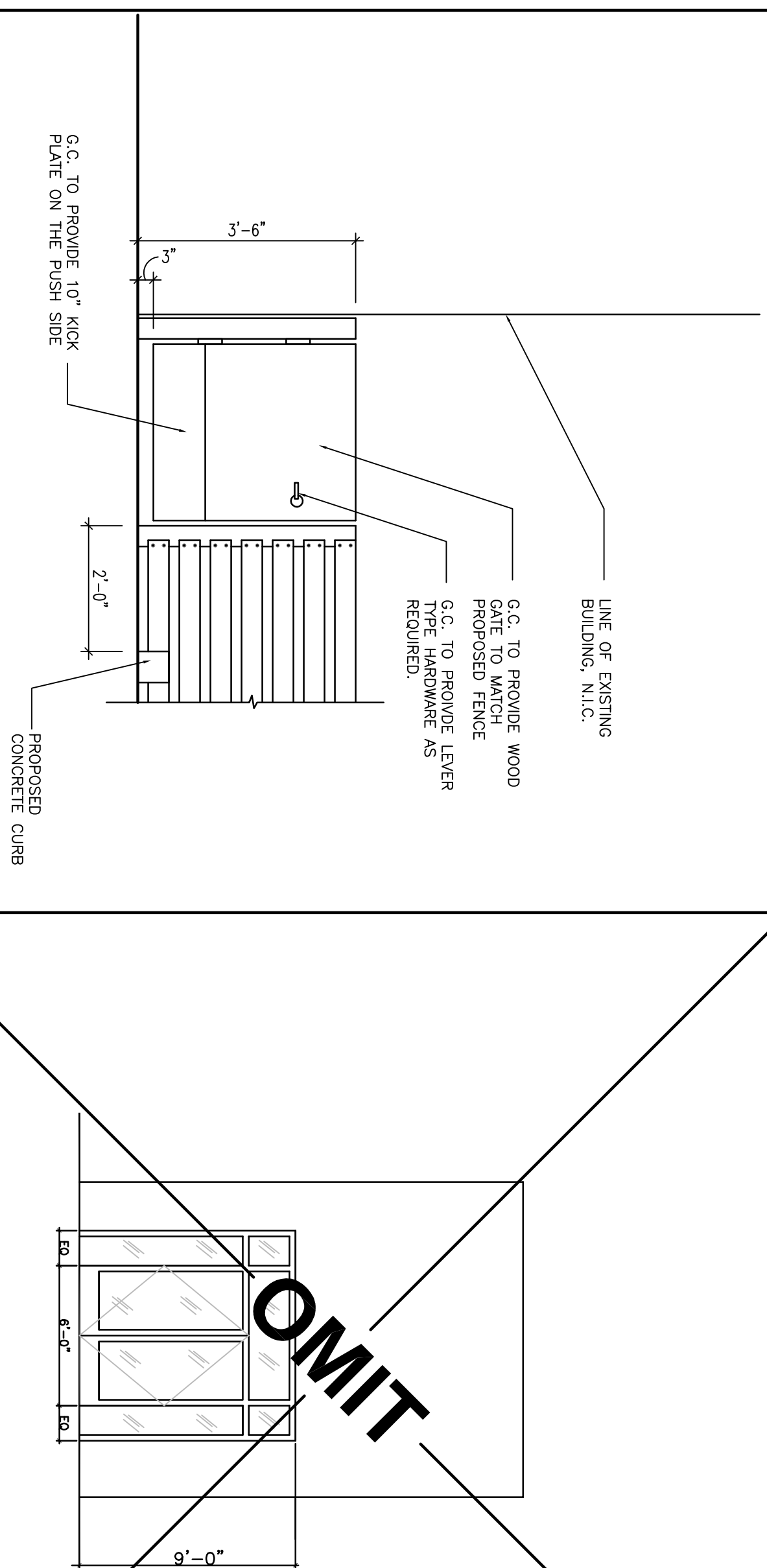
NORTH ELEVATION

SCALE: 3/16" = 1'-0"
NOTE: S.C. TO VERIFY ALL FINISHES AND DIMENSIONS.



WEST ELEVATION

SCALE: 3/16" = 1'-0"
NOTE: S.C. TO VERIFY ALL FINISHES AND DIMENSIONS.

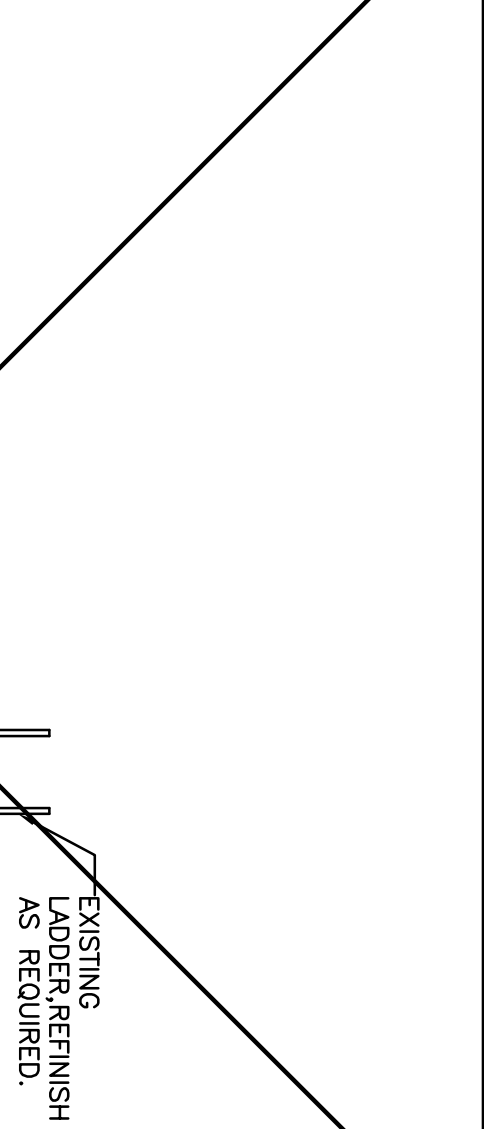


ELEVATION

SCALE: 1/2" = 1'-0"

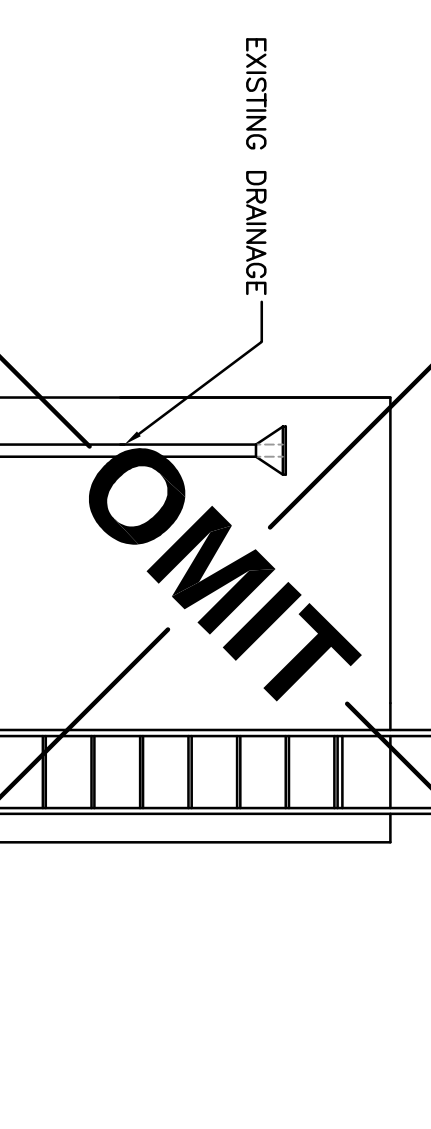
ELEVATION

SCALE: 3/16" = 1'-0"
NOTE: S.C. TO VERIFY ALL FINISHES AND DIMENSIONS.



ELEVATION

SCALE: 3/16" = 1'-0"
NOTE: S.C. TO VERIFY ALL FINISHES AND DIMENSIONS.



ELEVATION

SCALE: 3/16" = 1'-0"
NOTE: S.C. TO VERIFY ALL FINISHES AND DIMENSIONS.

MBT SHOES

916 MAIN STREET
VENICE, CA 90291

GROUND FLOOR

- ▲ ISSUE FOR PLAN CHECK CORRECTION 02.27.2008
- ▲ ISSUE FOR PLAN CHECK CORRECTION 12.08.2007
- ▲ ISSUE FOR BID & PLAN CHECK 02.08.2007
- NO. DESCRIPTION DATE

PROJ. DIRECTOR: JOHN WOLCOTT
PROJ. DESIGNER: G. PROTANO
DRAWN BY: H.L./R.H./J.S.

The above drawings and annotations are made, revised, and approved by the architect and are intended to be used for the construction of the project. It is the responsibility of the contractor to verify all dimensions and conditions of the site and to coordinate with the architect and engineer. The architect is not responsible for any errors or omissions in the drawings or for any conditions not shown or indicated. The architect is not responsible for any conditions not shown or indicated. The architect is not responsible for any conditions not shown or indicated.

JOB NO. 07-810

EXTERIOR ELEVATIONS

SHEET NO. A3.1