

SHELTER SHADE SAFETY COMFORT FOR ALL

Our program reimagines LA's bus stops as the backbone of a smart and equitable future for Angelenos.



OUR PRIORITIES

SHELTER– SHADE – SAFETY – COMFORT

Our priority is to provide well-designed, new bus shelters and mobility amenities across LA neighborhoods that meet the City's goals.

INSTALLING BUS SHELTERS WHERE THEY'RE NEEDED MOST

Bus stops are prioritized based on five criteria: 1) Transit Ridership 2) Heat Index 3) Equity Focused Community 4) Key Destinations 5) Long Wait Times

REFLECTING LOS ANGELES' DIVERSE NEIGHBORHOODS

We propose an iconic, yet timeless design for new bus stops that highlight the 'City of Neighborhoods' and LA's eclectic and optimistic culture.

SHELTER FEATURES

SAFE

- Open Design
- Enhanced Lighting
- Emergency Messaging
- Ensures Data Privacy

EQUITABLE

- Real-time Bus Arrival Info at 100% of units
- ADA accessible
- 75% of bus riders in each Council District able to board at stops with new shelters
- Multilingual capabilities

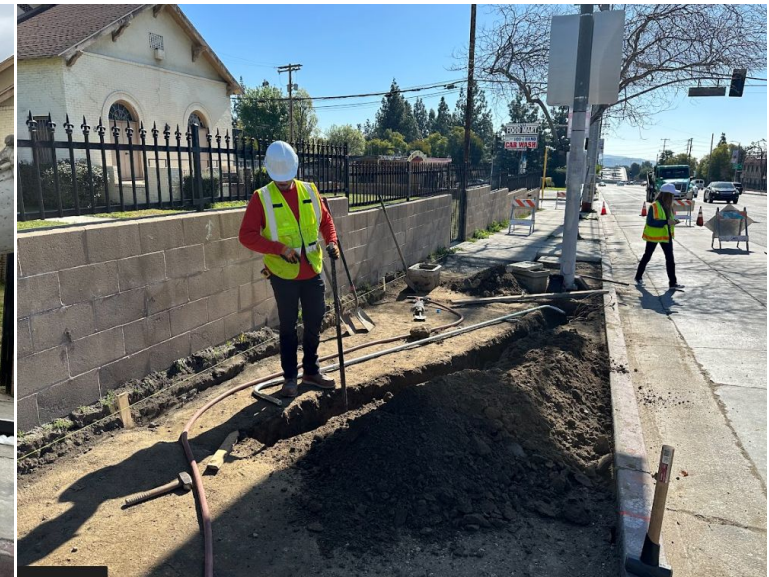
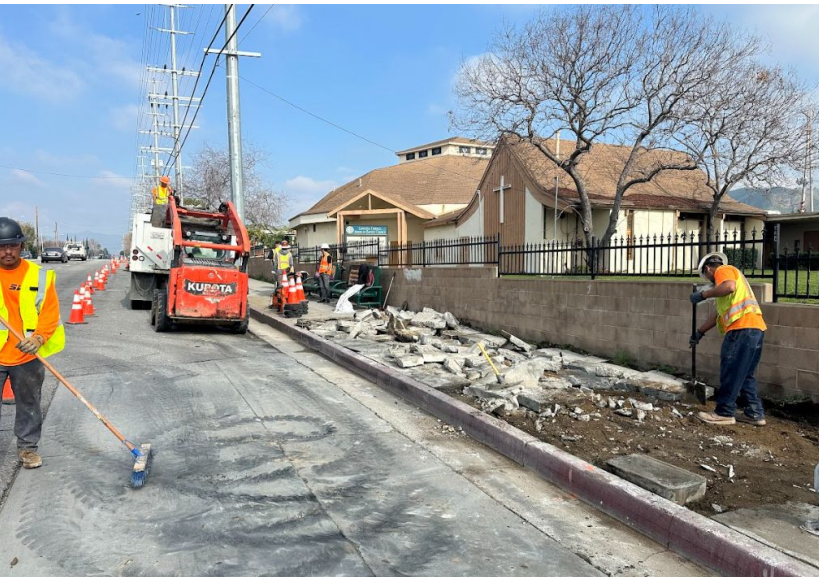
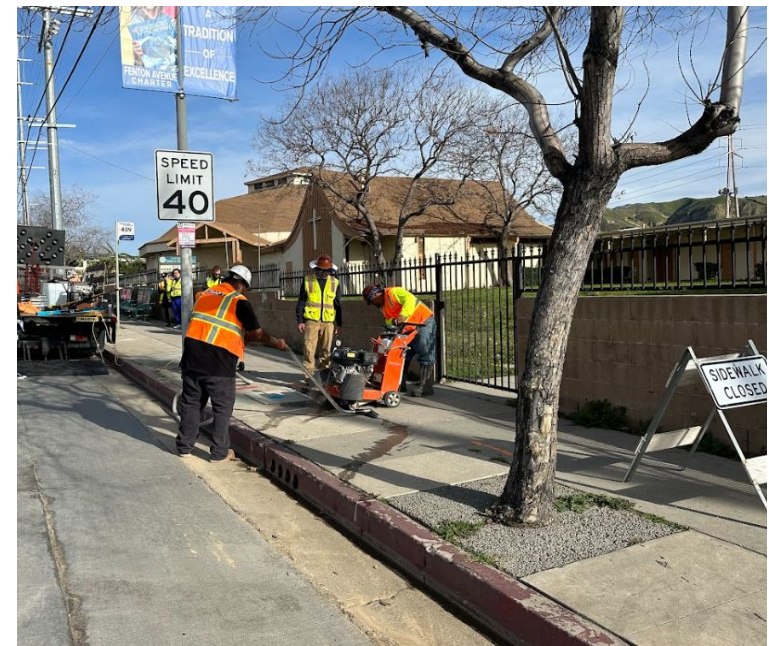
TECH-FORWARD

- Capable of future tech upgrades (requires council approval)
- All units connected to City data streams (ie 311, Amber/Silver alerts, Notify LA)



CONSTRUCTION WORK

- All sites brought up to ADA regulations
- Site reconstruction
- Sidewalk improvements
- Conduit and electrical work



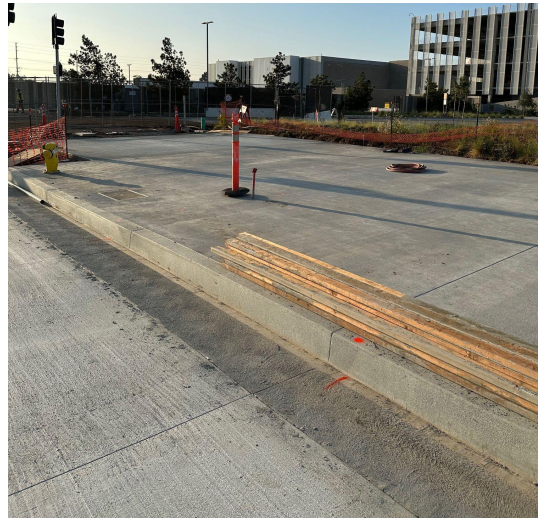
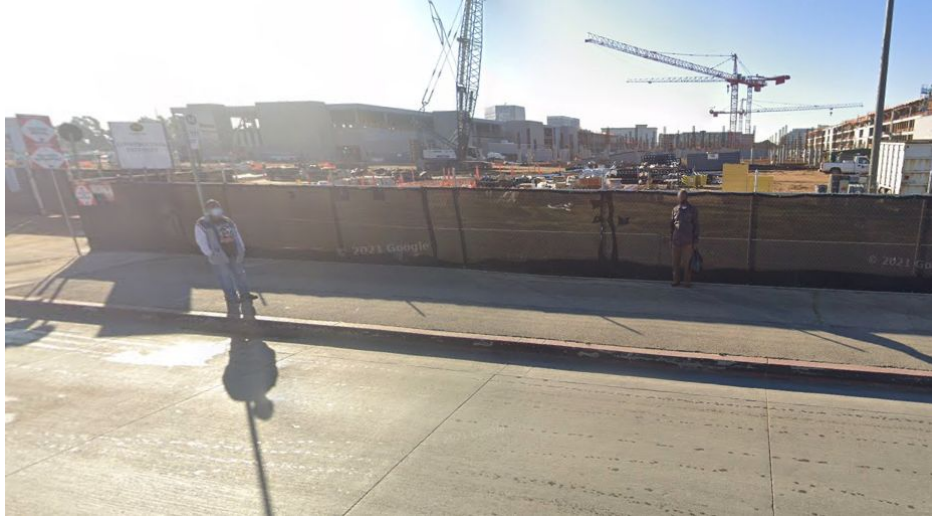
WHAT DOES IT LOOK LIKE ON THE STREET?



Western Ave & Olympic Blvd

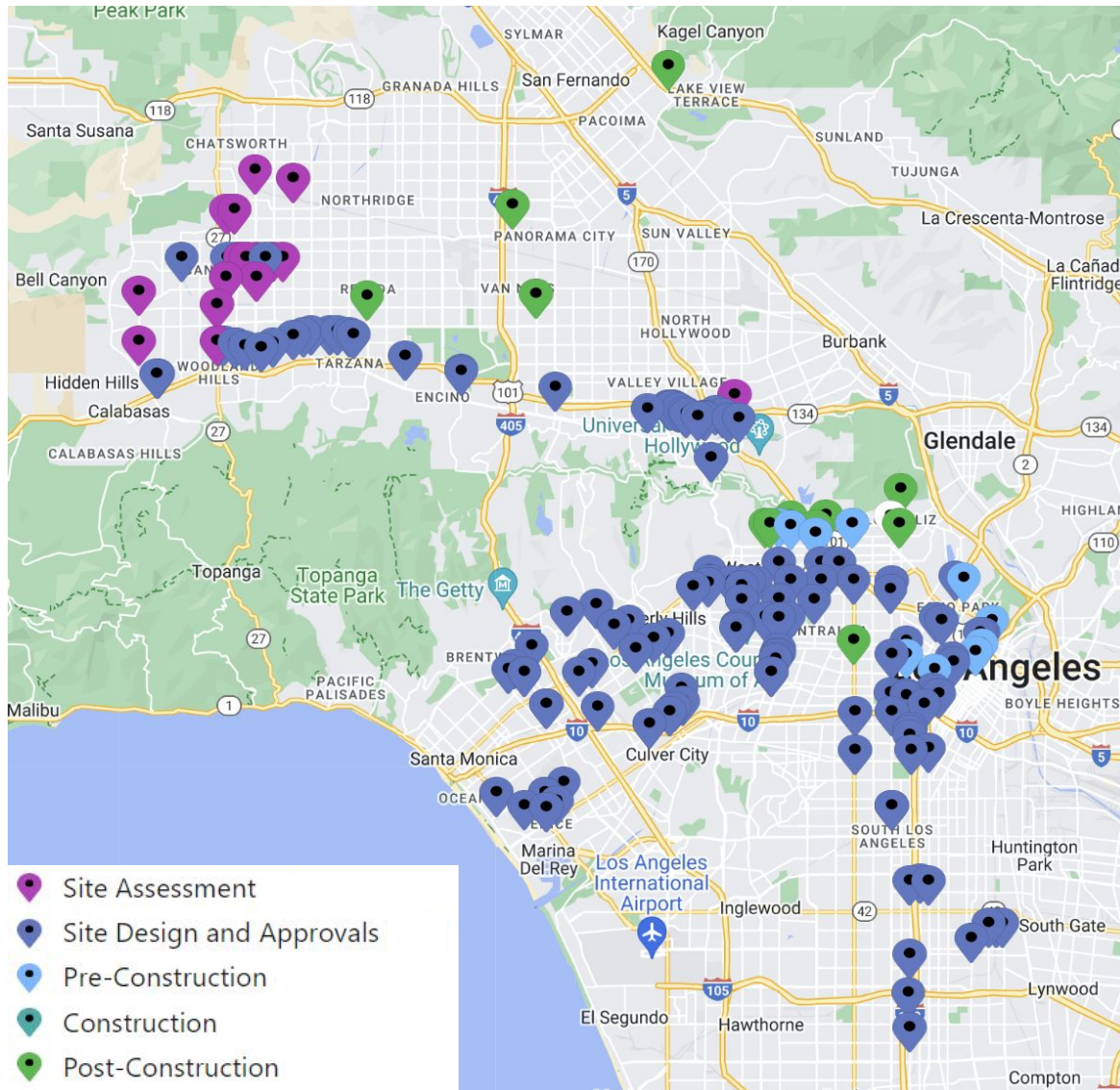


REFRESH PROGRAM



**Before and After
Arbor Vitae & Hindry**

WHAT'S NEXT?



- Bus Stop Furniture Service Request in the New MyLA311
- 2024 projections for 380 new shelters
- Distributed throughout the city in all 15 council districts
- Installations in early - mid June:
 - Western & Olympic (installed)
 - Reseda & Victory
 - Victory & Kester
 - Roscoe & Sepulveda
 - Foothill & Terra Bella

THANK YOU!



Questions are Welcome