

An aerial photograph of Venice Beach at sunset. The sun is low on the horizon, casting a golden glow over the ocean and the beach. Palm trees line the boardwalk, and many people are walking along the promenade. The text is overlaid on the center of the image.

# Venice Neighborhood Council Board Composition with Neighborhood Representation

**A Proposal by the Rules & Selection Committee  
March 2024**

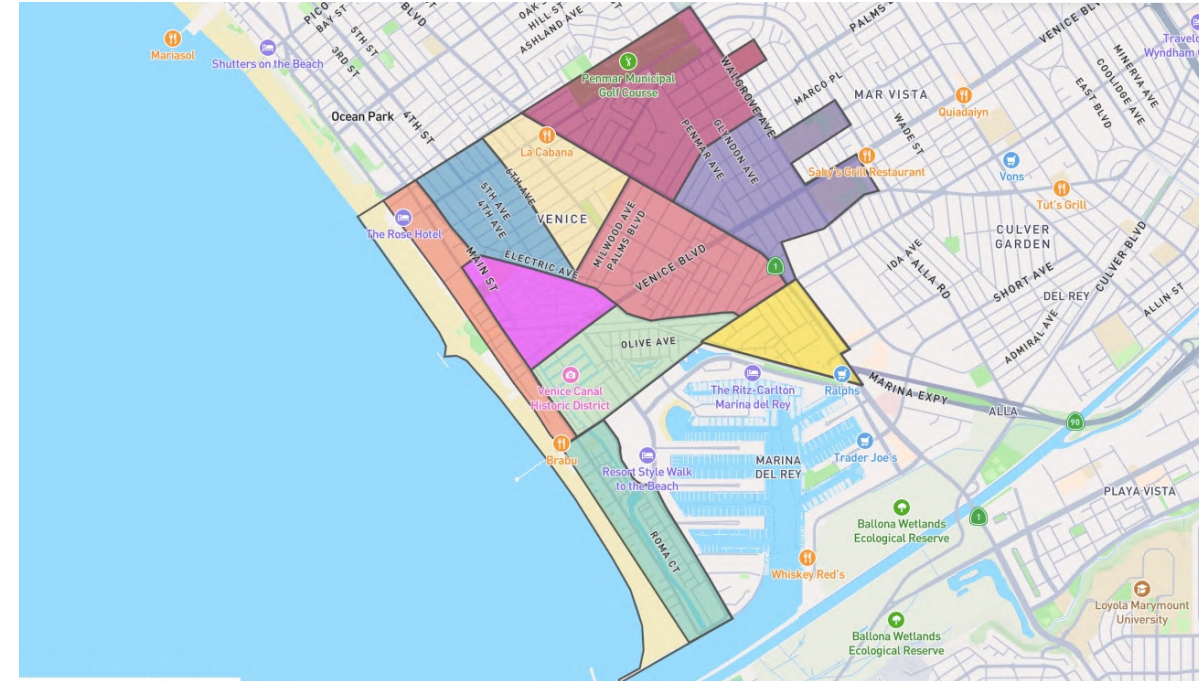


1

# THE CONCERN

HOW DO WE CREATE A NEIGHBORHOOD COUNCIL THAT REPRESENTS AND SERVES STAKEHOLDERS IN VENICE?

## STAKEHOLDER SURVEY RESULTS



**venice  
neighborhood  
council**

### AT-LARGE OFFICERS

72% of survey respondents indicated a desire to increase the number of votes for At-Large Officers

### AREA REPRESENTATION

80% of survey respondents indicated a desire for the VNC to elect Officers by representative areas/neighborhoods

### EXECUTIVE OFFICERS

90% of survey respondents indicated a desire to continue to vote for Executive Officers and Chairs individually



## OUR CONSTRAINTS



### EVEN DISTRIBUTION

In determining new neighborhoods for representation, it was vital to maintain even population distributions so no areas were under or over represented



### MAINTAIN NEIGHBORHOOD CHARACTER

As Venice has several areas with distinct characteristics and interests, we strove to keep like minded neighborhoods together when considering new neighborhood areas



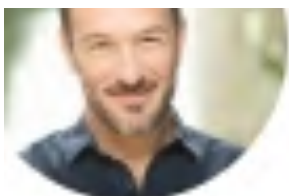
### USE OF MAIN STREETS

Per DONE and LA City, the definition of neighborhoods was to be done on major through streets, impacting how we were able to define each area

2

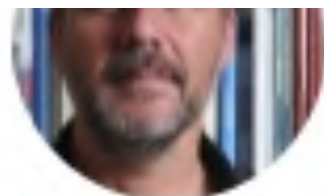
## **CURRENT BOARD COMPOSITION**





**Brian Averill**

President



**Tima Bell**

Secretary



**James Robb**

Vice President



**Helen Fallon**

Treasurer



**Nico Ruderman**

Communications Officer



**Erica Moore**

Outreach Chair



**Michael Jensen**

LUPC Chairman



**Alley Bean**

Community Officer



**Jason Sugars**

Community Officer



**Amara Iman Hordt**

Community Officer



**CJ Cole**

Community Officer



**Clark Brown**

Community Officer



**Keaton**



**Soledad Ursua**



**Robert Thibodeau**



**Steve Bradbury**

# CURRENT BOARD COMPOSITION

VOTE FOR EACH POSITION INDIVIDUALLY

- President
- Vice President
- Secretary
- Treasurer
- LUPC Chair
- Outreach Chair
- Communications Chair

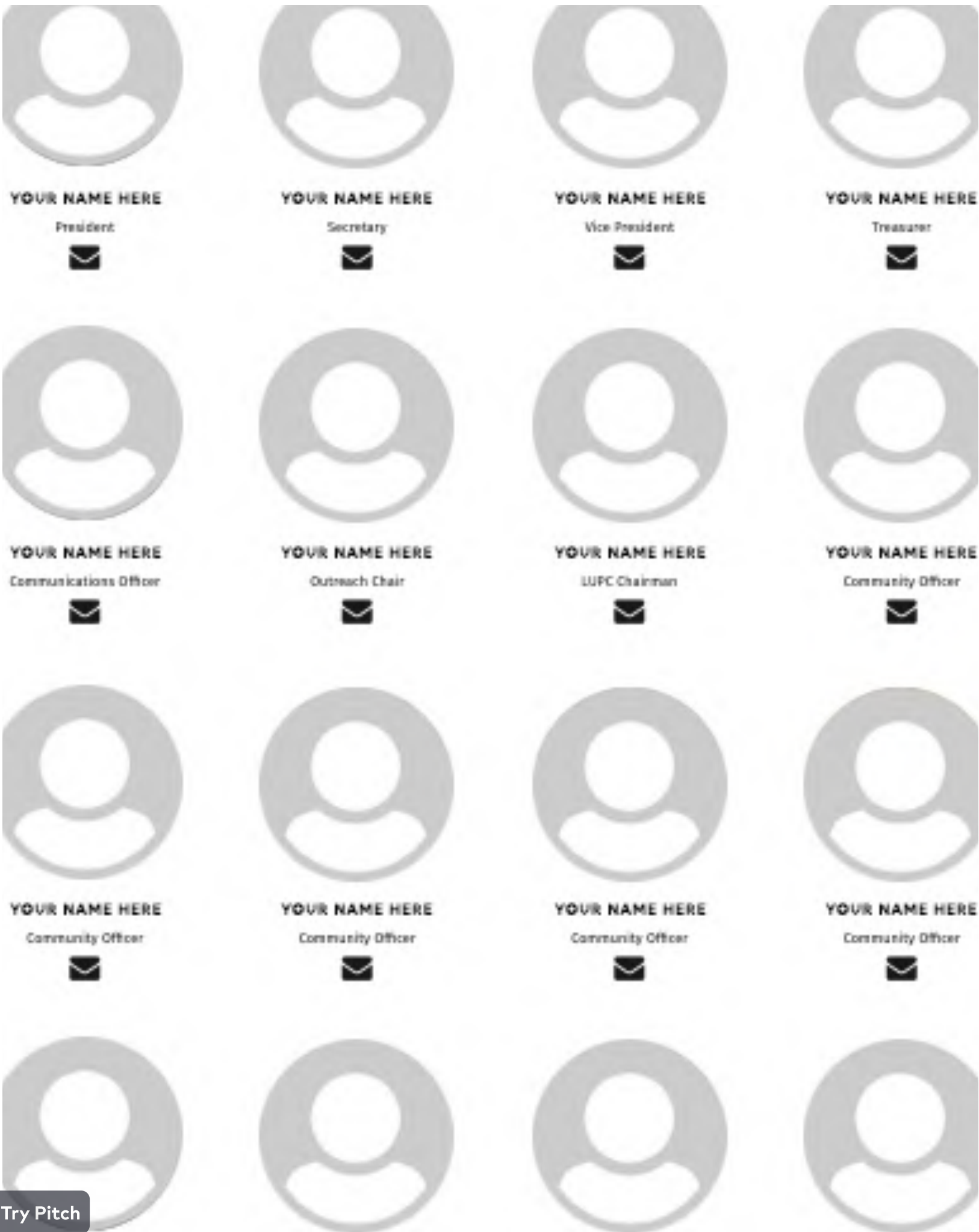
VOTE FOR ONE ONLY

- (13) At-Large Community Officers OR
- (1) Community Interest Officer

TOTAL VOTES: **8**

TOTAL POSITIONS: 21

# PROPOSED BOARD COMPOSITION



# PROPOSED BOARD COMPOSITION

## VOTE FOR EACH POSITION INDIVIDUALLY

- President
- Vice President
- Secretary
- Treasurer
- LUPC Chair
- Outreach Chair
- Communications Chair

## VOTE FOR ONE ONLY FROM YOUR AREA

- (10) Neighborhood Representatives

## VOTE FOR EACH POSITION

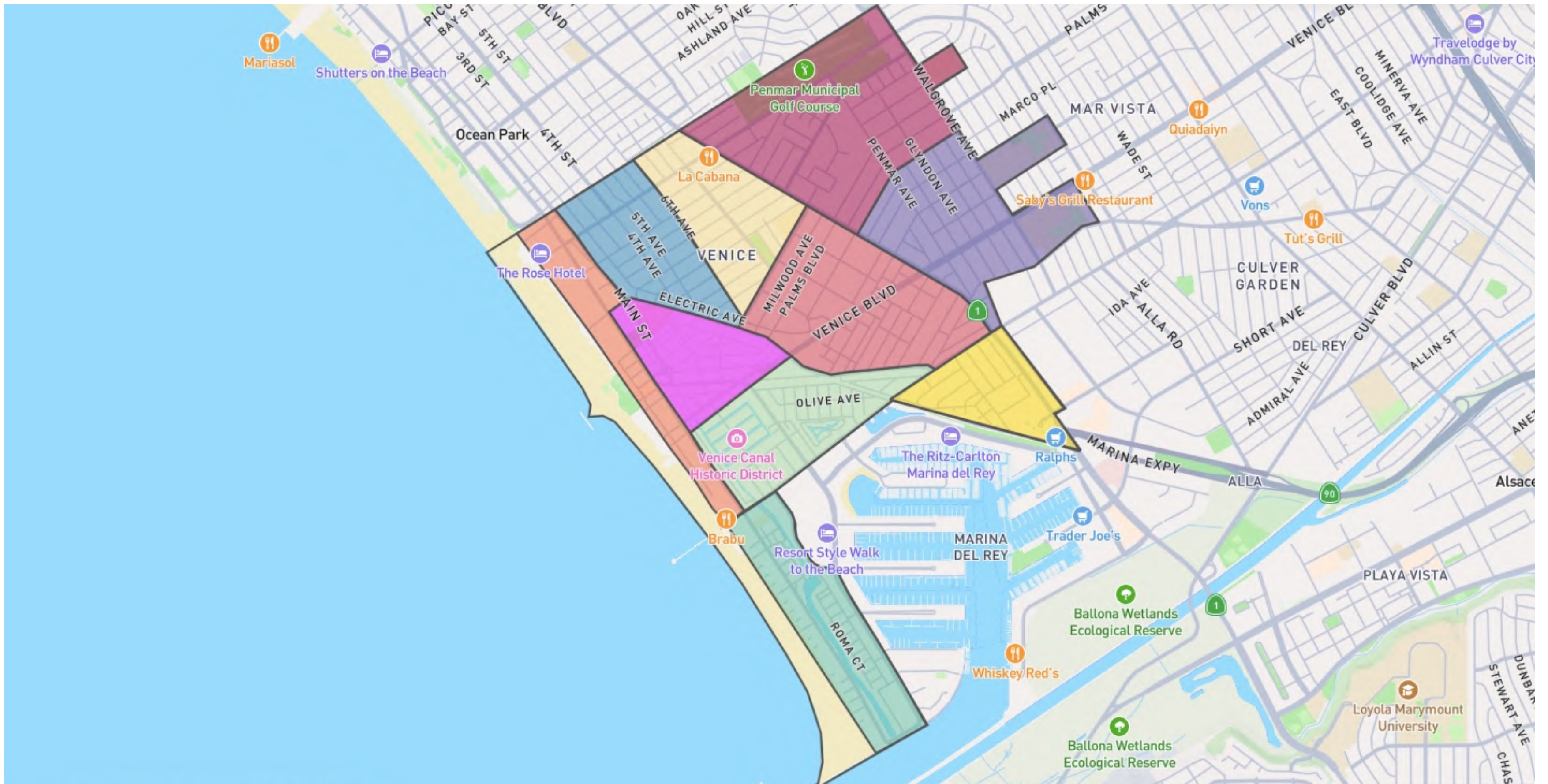
- (3) At-Large Community Officers
- (1) Community Interest Officer

TOTAL VOTES: **12**

TOTAL POSITIONS: 21

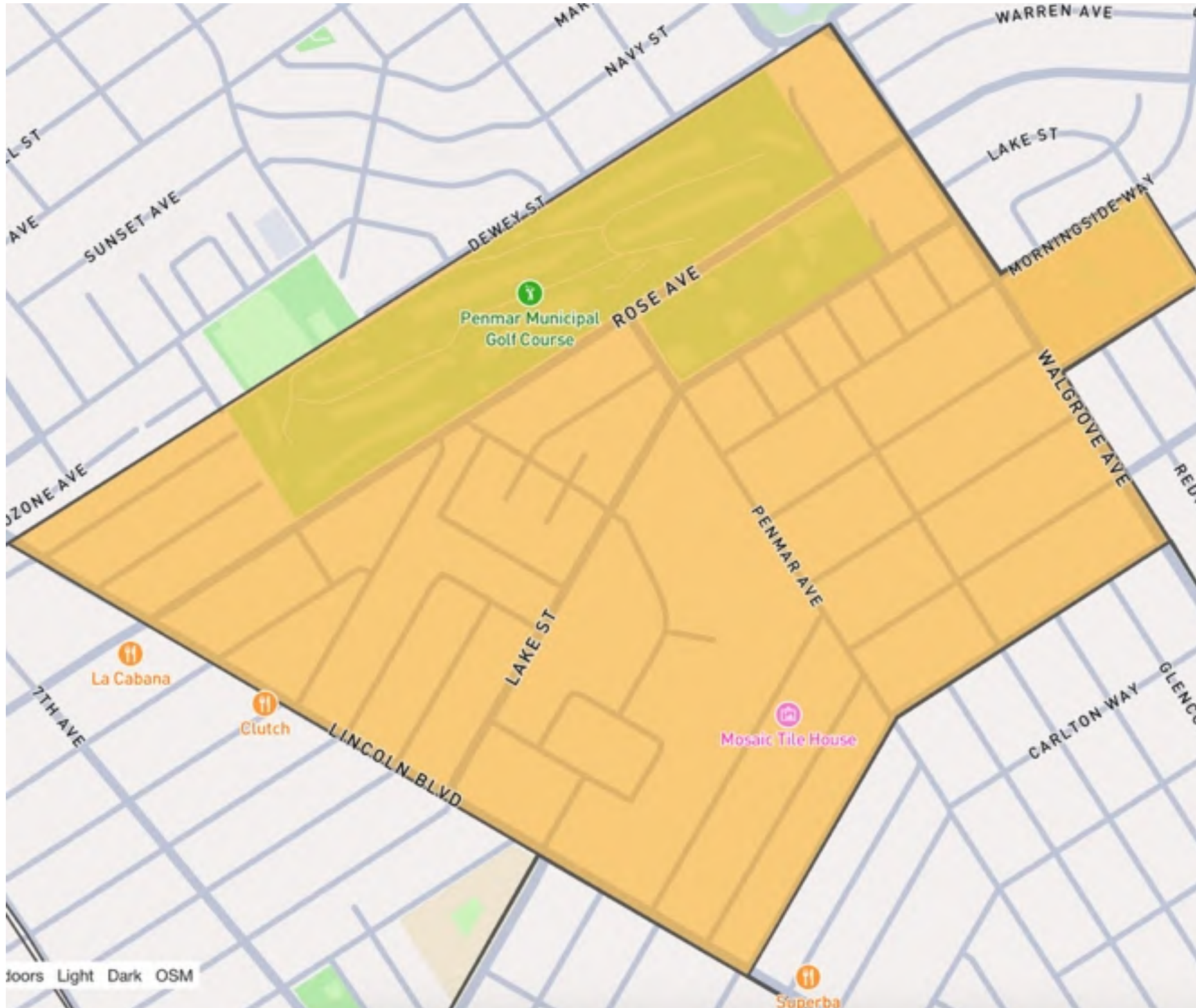


# PROPOSED VENICE NEIGHBORHOODS



10 PROPOSED DISTRICTS BY GEOGRAPHY AND PERCENTAGE OF POPULATION





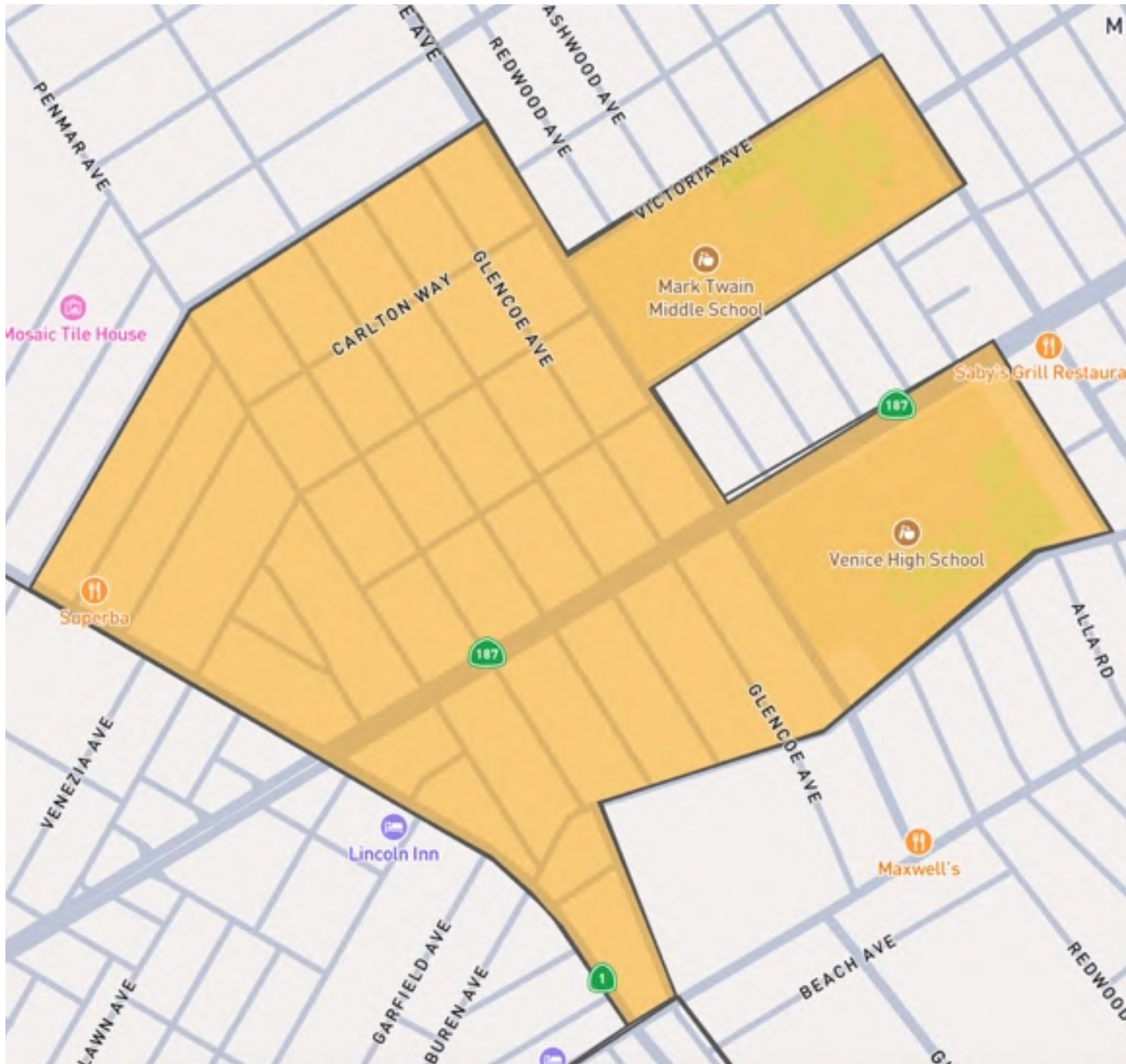
# 1.) East Venice North

## BOUNDARIES

- NORTH: City of Santa Monica
- EAST: Walgrove Ave
- SOUTH: Vienna Way / Superba Ave
- WEST: Lincoln Blvd

## POPULATION

- **8.52%**



## 2.) East Venice South

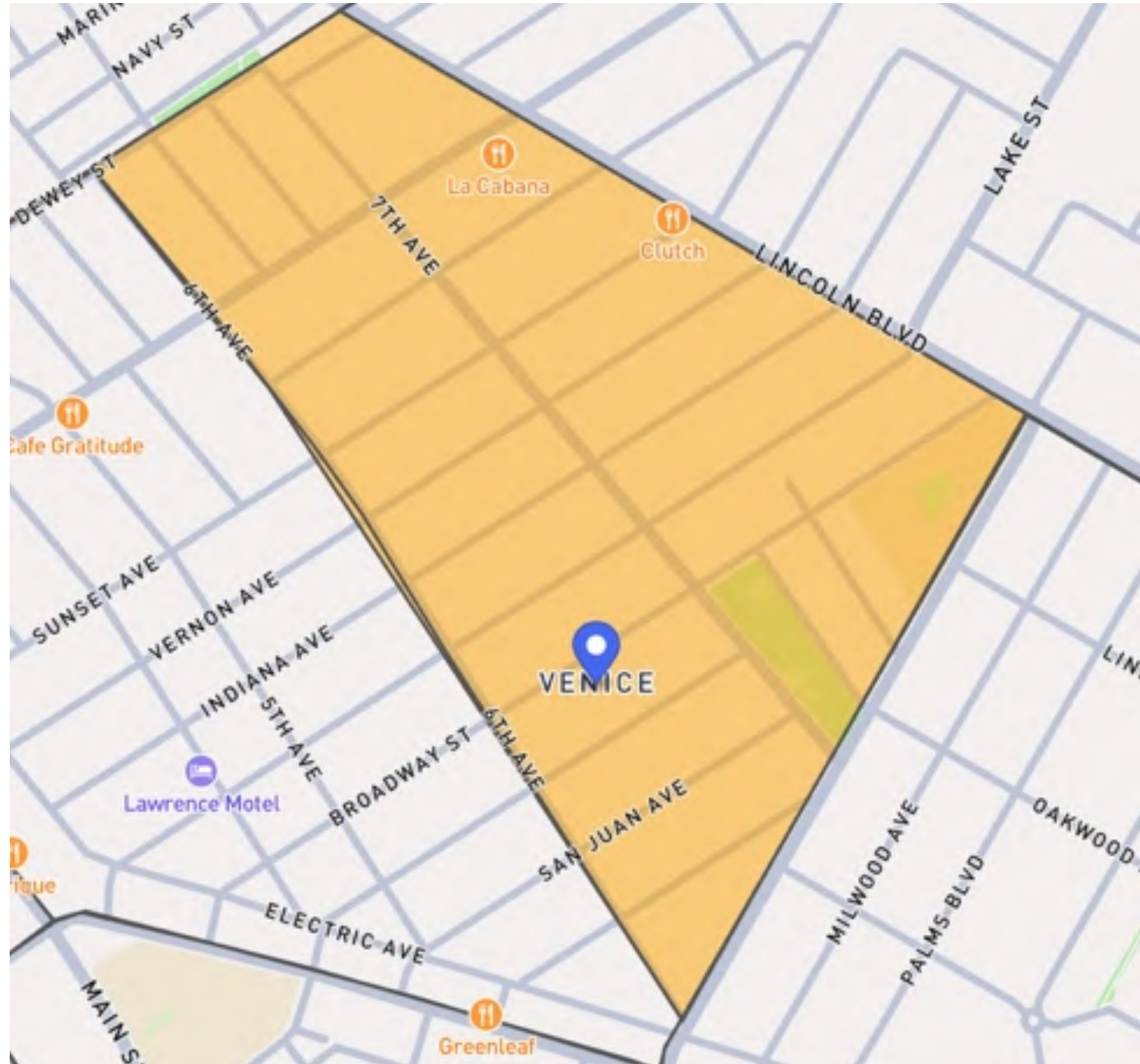
### BOUNDARIES

- NORTH: Vienna Way / Superba Ave
- EAST: Walgrove Ave
- SOUTH: Culver City + Walnut Ave
- WEST: Lincoln Blvd

### POPULATION

- **9.77%**





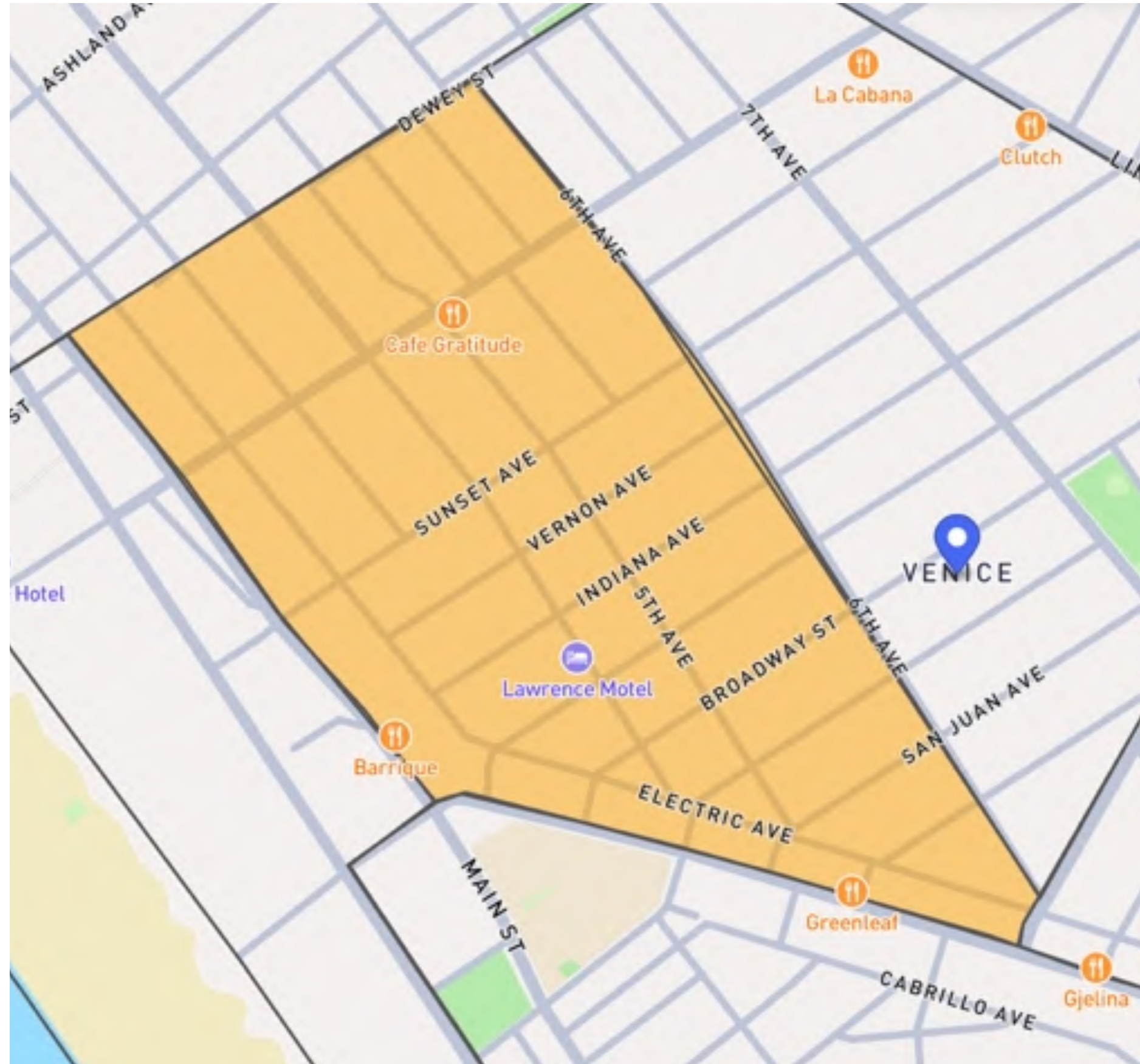
### 3.) Oakwood East

#### BOUNDARIES

- NORTH: City of Santa Monica
- EAST: Lincoln Blvd
- SOUTH: California Ave
- WEST: 6th Ave

#### POPULATION

- **10.00%**



## 4.) Oakwood West

### BOUNDARIES

- NORTH: City of Santa Monica
- EAST: 6th Ave
- SOUTH: Abbot Kinney Blvd + California Ave
- WEST: Main Street

### POPULATION

- **9.14%**





## 5.) Millwood + President's Row

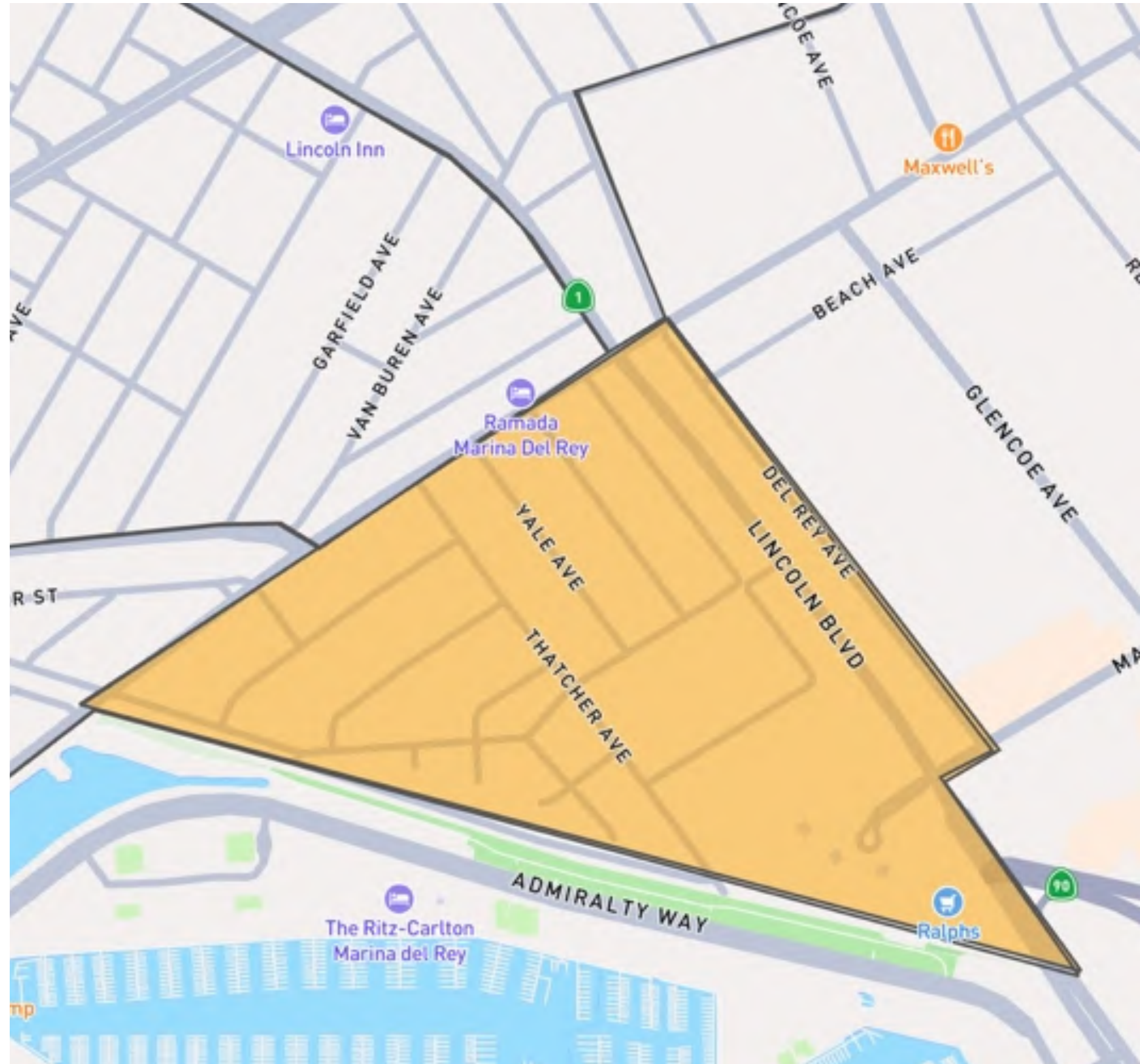
### BOUNDARIES

- NORTH: California Ave
- EAST: Lincoln Blvd
- SOUTH: Washington Blvd
- WEST: Abbot Kinney Blvd

### POPULATION

- **12.64%**





## 6.) Oxford Triangle

### BOUNDARIES

- NORTH: Washington Blvd
- EAST: Del Rey Ave
- SOUTH: Marina Del Rey (LA County unincorporated)
- WEST: Marina Del Rey (LA County unincorporated)

### POPULATION

• **10.26%**





## 7.) Windward Circle

### BOUNDARIES

- NORTH: Abbot Kinney + Brooks Ave
- EAST: Abbot Kinney Blvd
- SOUTH: S. Venice Blvd
- WEST: Pacific Ave

### POPULATION

- **7.27%**





## 8.) Canals + Silver Triangle

### BOUNDARIES

- NORTH: S. Venice Blvd
- EAST: Abbot Kinney Blvd
- SOUTH: Washington Blvd
- WEST: Pacific Ave

### POPULATION

- **9.38%**





## 9.) Ocean Front

### BOUNDARIES

- NORTH: City of Santa Monica
- EAST: Main Street to Brooks, then Pacific Ave
- SOUTH: Washington Blvd
- WEST: Pacific Ocean

### POPULATION

- **10.47%**



## 10.) Peninsula

### BOUNDARIES

- NORTH: Washington Blvd
- EAST: Marina Del Rey (LA County unincorporated)
- SOUTH: Marina Channel
- WEST: Pacific Ocean

### POPULATION

- **12.52%**



5

# CONCLUSION

## STAKEHOLDER SURVEY RESULTS



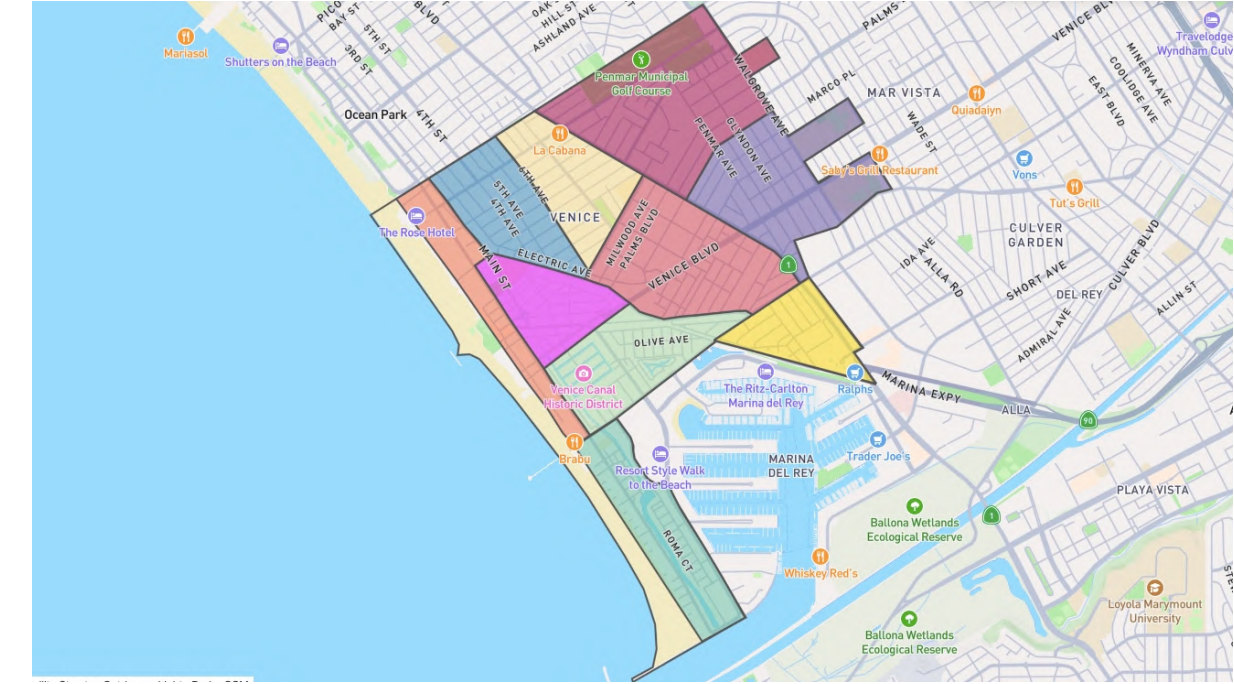
### ACCOUNTABILITY

Based on our stakeholder survey, we created a system that addressed their concerns and kept what works for them



### DIRECT COMMUNITY INVOLVEMENT

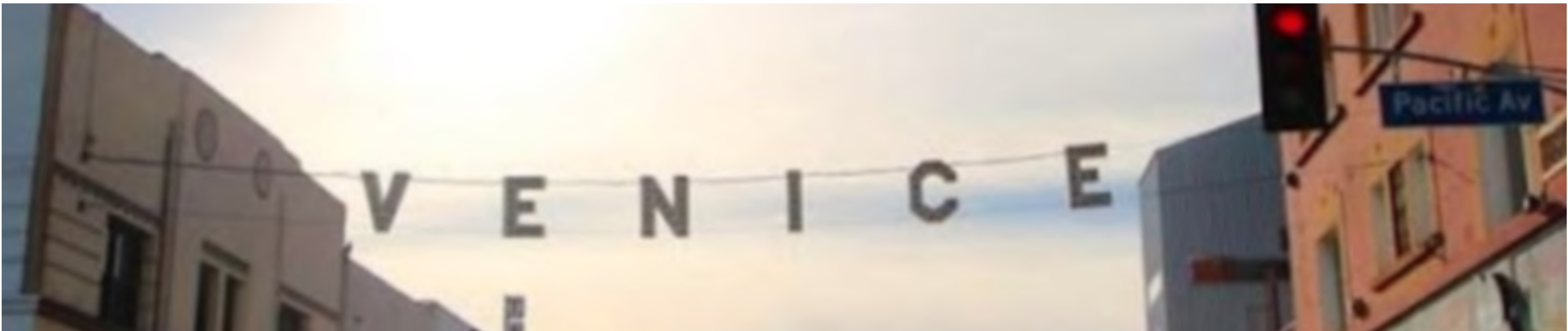
Our new proposed Board composition increases stakeholder votes from 8 positions to 12 positions, a 50% increase in hearing our stakeholders



### GEOGRAPHIC DIVERSITY

Our proposed neighborhoods create 10 areas in Venice that are balanced in population and geography, allowing for clearer, more accountable representation





**THANK YOU**

[RULES@VENICENC.ORG](mailto:RULES@VENICENC.ORG)

