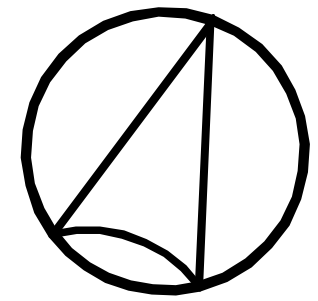


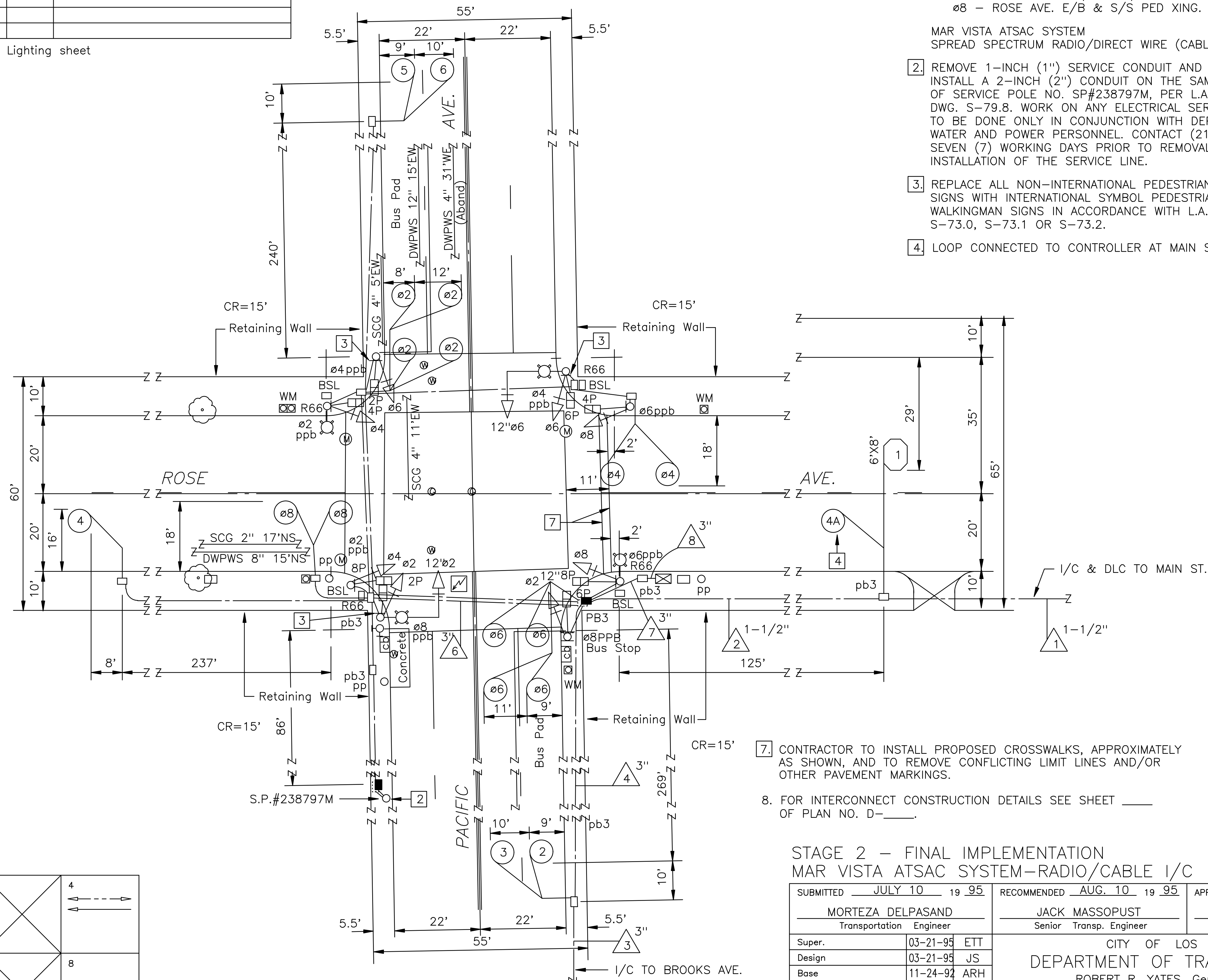
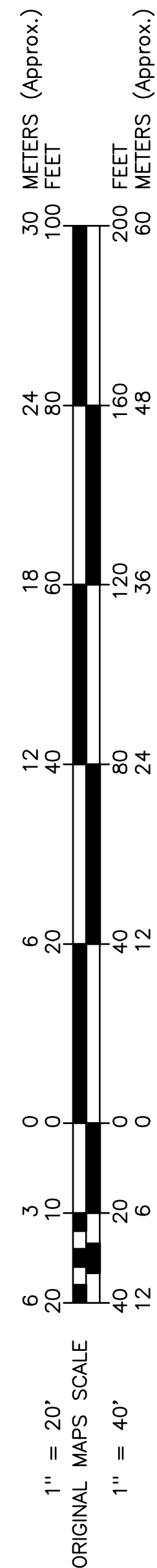
SIGNAL STANDARD SCHEDULE

No.	TYPE	FOUND. TYPE	PED. PUSH BUT'N		REMARKS
			TYPE	PHASE	

* For reference only; see Street Lighting sheet



SCALE: 1"=20'



NOTES:

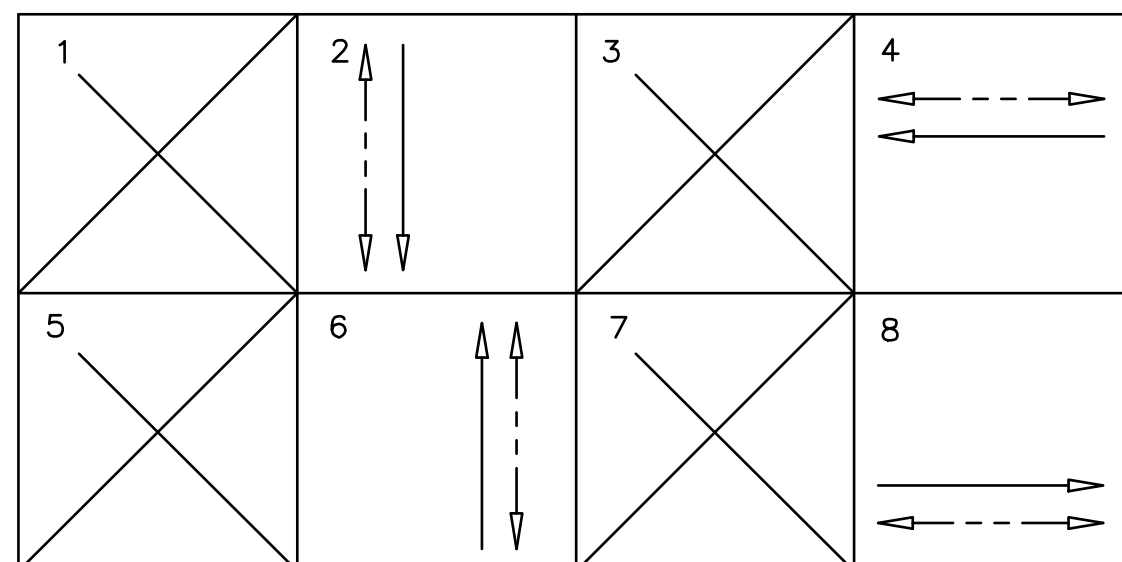
1. FULLY-ACTUATED OPERATION (ATSAC 170 CONTROLLER)

- ø2 - PACIFIC AVE. S/B & W/S PED XING.
- ø4 - ROSE AVE. W/B & N/S PED XING.
- ø6 - PACIFIC AVE. N/B & E/S PED XING.
- ø8 - ROSE AVE. E/B & S/S PED XING.

MAR VISTA ATSAC SYSTEM
SPREAD SPECTRUM RADIO/DIRECT WIRE (CABLE) INTERCONNECT

- 2. REMOVE 1-INCH (1") SERVICE CONDUIT AND FUSE BOX. INSTALL A 2-INCH (2") CONDUIT ON THE SAME QUADRANT OF SERVICE POLE NO. SP#238797M, PER L.A.D.O.T. STD. DWG. S-79.8. WORK ON ANY ELECTRICAL SERVICE EQUIPMENT TO BE DONE ONLY IN CONJUNCTION WITH DEPARTMENT OF WATER AND POWER PERSONNEL. CONTACT (213) 482-0306 SEVEN (7) WORKING DAYS PRIOR TO REMOVAL OR INSTALLATION OF THE SERVICE LINE.
- 3. REPLACE ALL NON-INTERNATIONAL PEDESTRIAN PUSHBUTTON SIGNS WITH INTERNATIONAL SYMBOL PEDESTRIAN PUSHBUTTON WALKINGMAN SIGNS IN ACCORDANCE WITH L.A.D.O.T. STD. DWGS. S-73.0, S-73.1 OR S-73.2.
- 4. LOOP CONNECTED TO CONTROLLER AT MAIN ST. & ROSE AVE..

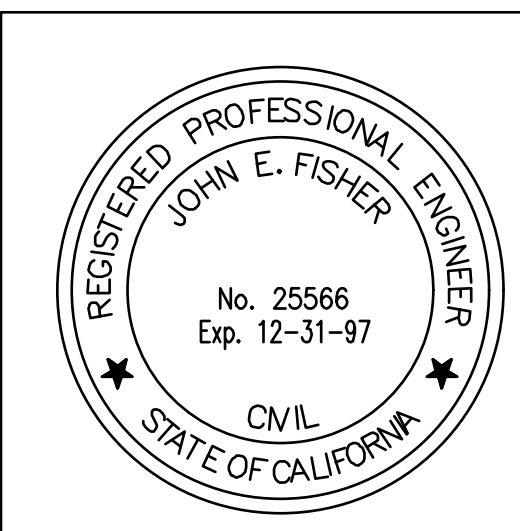
- 7. CONTRACTOR TO INSTALL PROPOSED CROSSWALKS, APPROXIMATELY AS SHOWN, AND TO REMOVE CONFLICTING LIMIT LINES AND/OR OTHER PAVEMENT MARKINGS.
- 8. FOR INTERCONNECT CONSTRUCTION DETAILS SEE SHEET ____ OF PLAN NO. D-____.



EXISTING PHASE DIAGRAM

AS BUILT

COND. AS OF 2-19-98
INSTALLED MUI/JC/RSM



STAGE 2 - FINAL IMPLEMENTATION
MAR VISTA ATSAC SYSTEM-RADIO/CABLE I/C

SUBMITTED	JULY 10 19 95	RECOMMENDED	AUG. 10 19 95	APPROVED	AUGUST 29 19 95
MORTEZA DELPASAND Transportation Engineer		JACK MASSOPUST Senior Transp. Engineer		JOHN E. FISHER Principal Transp. Engineer	
Super.	03-21-95	ETT	CITY OF LOS ANGELES DEPARTMENT OF TRANSPORTATION ROBERT R. YATES, General Manager		
Design	03-21-95	JS			
Base	11-24-92	ARH			
Exist. Signals	11-24-92	ARH			
Proposed Base					
Proposed Signals	03-21-95	ARH	TITLE PACIFIC AVE. & ROSE AVE.		
References		Geom. Design	REVISIONS		Project No.
FIELD CHECK PROJ NO. A71-L-79110		District	BY	APPR.	DES-73016 CON-73017
		ATSAC Design	DATE		FILE: MARV1RC